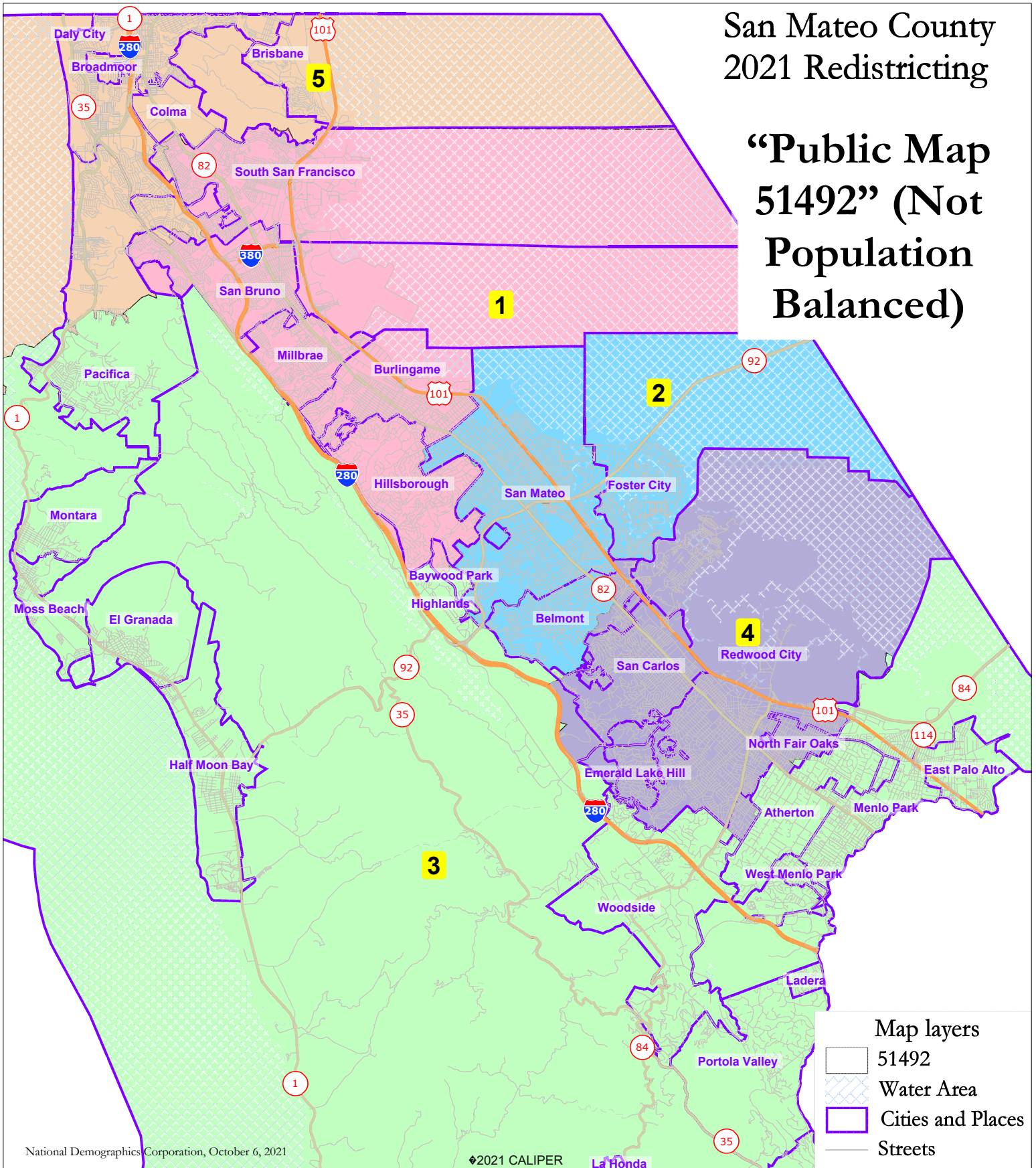


San Mateo County 2021 Redistricting

“Public Map 51492” (Not Population Balanced)



San Mateo County Public Map 51492

District		1	2	3	4	5	Total
	Total Pop	162,545	162,398	141,009	145,069	154,396	765,417
	Deviation from ideal	9,462	9,315	-12,074	-8,014	1,313	21,536
	% Deviation	6.18%	6.08%	-7.89%	-5.24%	0.86%	14.07%
Total Pop	% Hisp	24.3%	20%	28%	31%	22%	25%
	% NH White	32%	39%	50%	45%	17%	36%
	% NH Black	2%	2%	4%	2%	3%	2%
	% Asian-American	37%	35%	13%	19%	54%	32%
Citizen Voting Age Pop	Total	109,988	99,133	92,461	89,822	109,445	500,848
	% Hisp	21%	14%	15%	21%	18%	18%
	% NH White	41%	52%	66%	61%	22%	47%
	% NH Black	2%	3%	5%	2%	4%	3%
	% Asian/Pac.Isl.	36%	30%	12%	15%	55%	31%
Voter Registration (Nov 2020)	Total	96,648	92,101	88,711	83,351	85,075	445,886
	% Latino est.	21%	13%	15%	18%	29%	19%
	% Spanish-Surnamed	20%	12%	14%	17%	27%	18%
	% Asian-Surnamed	19%	18%	7%	10%	18%	14%
	% Filipino-Surnamed	4%	2%	1%	1%	12%	4%
	% NH White est.	55%	64%	72%	69%	37%	59%
	% NH Black	2%	3%	6%	2%	6%	4%
Voter Turnout (Nov 2020)	Total	81,893	79,514	75,609	72,428	68,432	377,876
	% Latino est.	21%	12%	13%	16%	29%	18%
	% Spanish-Surnamed	19%	11%	12%	15%	27%	17%
	% Asian-Surnamed	19%	18%	7%	10%	18%	14%
	% Filipino-Surnamed	4%	2%	1%	1%	11%	4%
	% NH White est.	56%	64%	74%	71%	37%	61%
	% NH Black	2%	3%	5%	2%	6%	3%
Voter Turnout (Nov 2018)	Total	58,800	60,622	59,961	56,020	44,502	279,905
	% Latino est.	19%	10%	11%	14%	27%	16%
	% Spanish-Surnamed	17%	10%	10%	13%	25%	15%
	% Asian-Surnamed	15%	16%	6%	8%	15%	12%
	% Filipino-Surnamed	4%	2%	1%	1%	10%	3%
	% NH White est.	61%	69%	78%	75%	42%	66%
	% NH Black est.	2%	3%	4%	2%	6%	3%
ACS Pop. Est.	Total	160,857	159,956	143,723	146,475	156,380	767,391
Age	age0-19	22%	23%	26%	24%	18%	23%
	age20-60	55%	56%	51%	57%	58%	55%
	age60plus	23%	21%	23%	19%	24%	22%
Immigration	immigrants	35%	36%	24%	31%	47%	35%
	naturalized	67%	50%	47%	45%	69%	58%
Language spoken at home	english	53%	56%	66%	58%	40%	54%
	spanish	17%	14%	22%	25%	15%	18%
	asian-lang	22%	19%	6%	8%	40%	19%
	other lang	9%	11%	6%	8%	5%	8%
Language Fluency	Speaks Eng. "Less than Very Well"	17%	17%	11%	15%	25%	17%
Education (among those age 25+)	hs-grad	34%	26%	28%	29%	40%	32%
	bachelor	30%	32%	26%	27%	30%	29%
	graduatedegree	19%	28%	29%	26%	10%	22%
Child in Household	child-under18	33%	32%	35%	34%	30%	33%
Pct of Pop. Age 16+	employed	69%	70%	66%	71%	69%	69%
Household Income	income 0-25k	9%	8%	9%	9%	9%	9%
	income 25-50k	10%	10%	11%	11%	13%	11%
	income 50-75k	10%	9%	11%	10%	13%	11%
	income 75-200k	44%	41%	35%	37%	47%	41%
	income 200k-plus	26%	32%	34%	33%	17%	29%
Housing Stats	single family	65%	56%	79%	66%	66%	66%
	multi-family	35%	44%	21%	34%	34%	34%
	rented	41%	44%	32%	43%	38%	40%
	owned	59%	56%	68%	57%	62%	60%

Total population data from the 2020 Decennial Census.

Surname-based Voter Registration and Turnout data from the California Statewide Database.

Latino voter registration and turnout data are Spanish-surname counts adjusted using Census Population Department undercount estimates. NH White and NH Black registration and turnout counts estimated by NDC. Citizen Voting Age Pop., Age, Immigration, and other demographics from the 2015-2019 American Community Survey and Special Tabulation 5-year data.