



REDISTRICTING BUENA PARK

COMMUNITY WORKSHOP



HOUSEKEEPING

- ✓ Sign-in to receive future notifications for redistricting information.
- ✓ Korean & Spanish interpreters available tonight.
- ✓ Restrooms located outside the doors.
- ✓ Handouts and paper maps are available at the sign-in table.
- ✓ Refreshments are available in the back.
- ✓ Need Assistance? Ask a staff member.

CONTACT INFORMATION



ADRIA JIMENEZ, CITY CLERK



(714) 562-3750



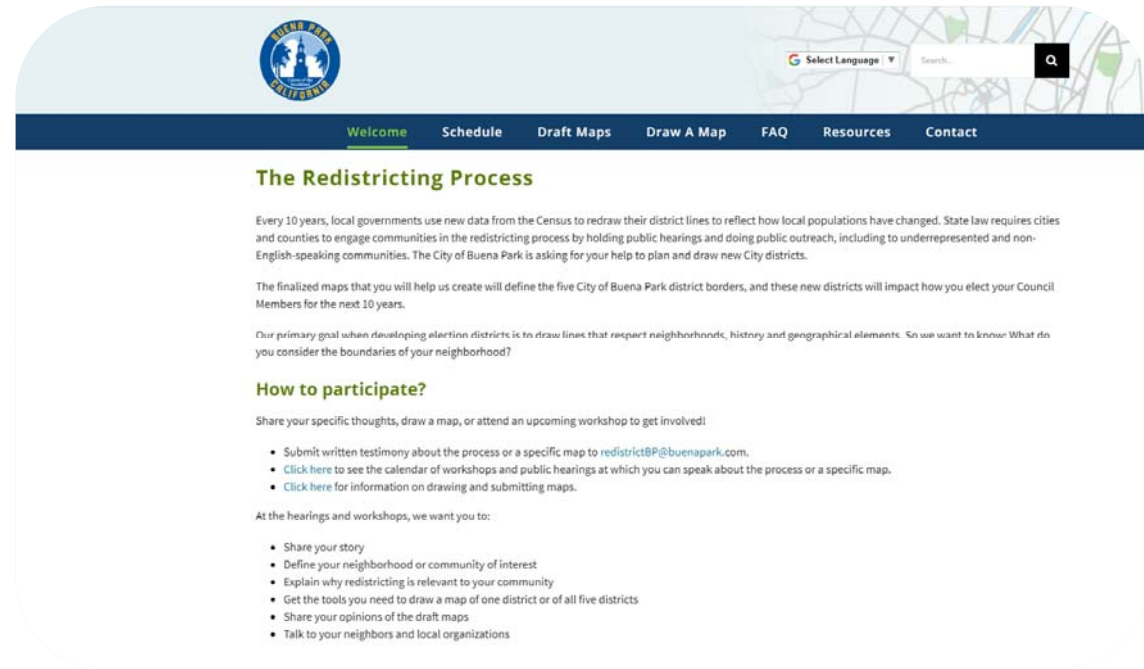
ajimenez@buenapark.com



redistrictbp@buenapark.com



www.redistrictbp.org



LANGUAGE ACCESS

2021 재구획 커뮤니티 워크숍 & 공청회

- 부에나 파크시는 의회 의원 선거구를 다시 그리는 중입니다
- 선거구 재구획이 왜 문제되는지 가담하십시오
 - 자신의 재구획 지도를 개발하고 제출하는법을 알아보십시오

커뮤니티 워크숍
7월 29일
9월 9일
10월 21일
11월 2일



City of BUENA PARK

공청회 고지

부에나 파크 시
공청회 고지

공지 안내 드립니다 부에나 파크 시의회가 2021년 7월 13일 오후 6시에 또는 빠른 시일내에 공청회를 개최할 예정입니다. 공청회는 다음 사항들을 고려하기 위해 6650 Beach Boulevard, Buena Park, California에 위치한 시빅 센터 시의회 회의소 (Council Chamber of the Civic Center) 에서 개최합니다.

5개의 의원 지구 재배치에 관한 의견들을 접수하기 위한 공청회

2016년 시의회에서는 캘리포니아 투표권 법 (California Voting Rights Act)에 따라 단일 멤버 선거 지구 시스템을 이행하기위한 조치를 취했습니다. 2016년 11월 선거를 시작으로 부에나 파크 시에서 전체 투표 대신 5개 개별 지구에서 시의회 위원을 선출하기 시작하였습니다. 2020년 미국 인구 조사가 완료됨에 따라 시의회에서 인구 변화와 경계 조정을 분석하고 고려해야 합니다.

Redistribución de Distritos 2021 Talleres Comunitarios y Audiencias Públicas



- Buena Park está redibujando los distritos de los miembros del consejo:
- Únase y aprenda por qué la redistribución de distritos es importante
 - Aprenda a desarrollar y entregar su propio mapa de redistribución de distritos

¡Pase por nuestro
Sábado Súper 5
14 de agosto en

Talleres

29 de julio
9 de septiembre
21 de octubre
2 de noviembre

Servicios de intérprete

2021
커뮤니티 워크숍

부에나 파크 시
선거구 재구획



City of BUENA PARK
PUBLIC HEARING NOTICE

AYUNTAMIENTO DE LA CIUDAD DE BUENA PARK
NOTIFICACION DE AUDIENCIA PÚBLICA

SE HACE LA PRESENTE NOTIFICACIÓN de que el Concilio del Ayuntamiento de la Ciudad de Buena Park llevará a cabo una audiencia pública en la Cámara del Concilio del Centro Cívico, 6650 Beach Boulevard, Buena Park, California, el 13 de julio del 2021, a las 6 p.m., o tan pronto como sea posible después como pueda ser escuchado, para considerar lo siguiente:

AUDIENCIA PÚBLICA PARA RECIBIR APORTACIONES Y COMENTARIOS ACERCA DE LA REDISTRIBUCIÓN DE CINCO DISTRITOS DE CONCEJALES

En 2016, el Concilio de la Ciudad tomó previamente medidas para implementar un sistema de elección de distrito de un solo miembro en cumplimiento con la Ley de Derecho al Voto de California. A partir de las elecciones de noviembre del 2016, Buena Park inició la elección de los miembros del Concilio de la Ciudad de cinco distritos individuales a diferencia de la votación general de la ciudad. Con los resultados del Censo de los Estados Unidos del 2020, el Concilio de la Ciudad debe ahora analizar y considerar los cambios de población y ajustes de los límites de las divisiones políticas.



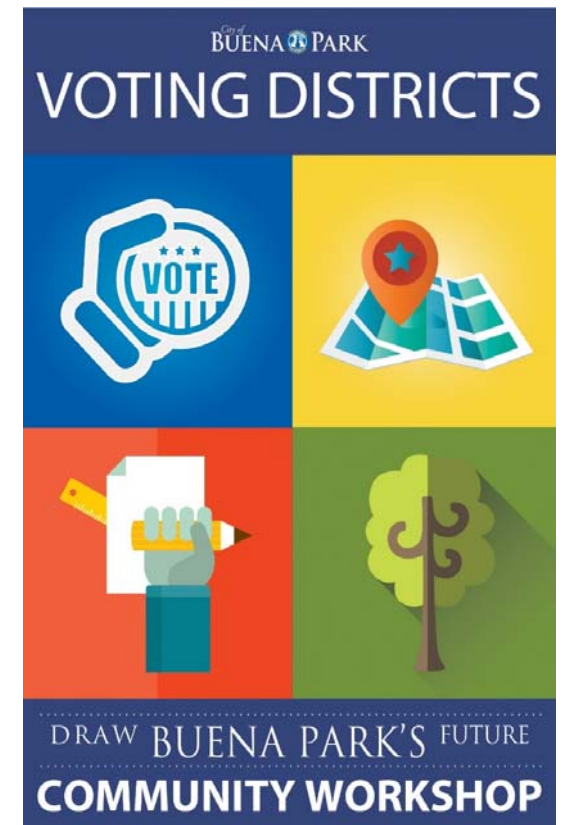
REDISTRICTING BUENA PARK

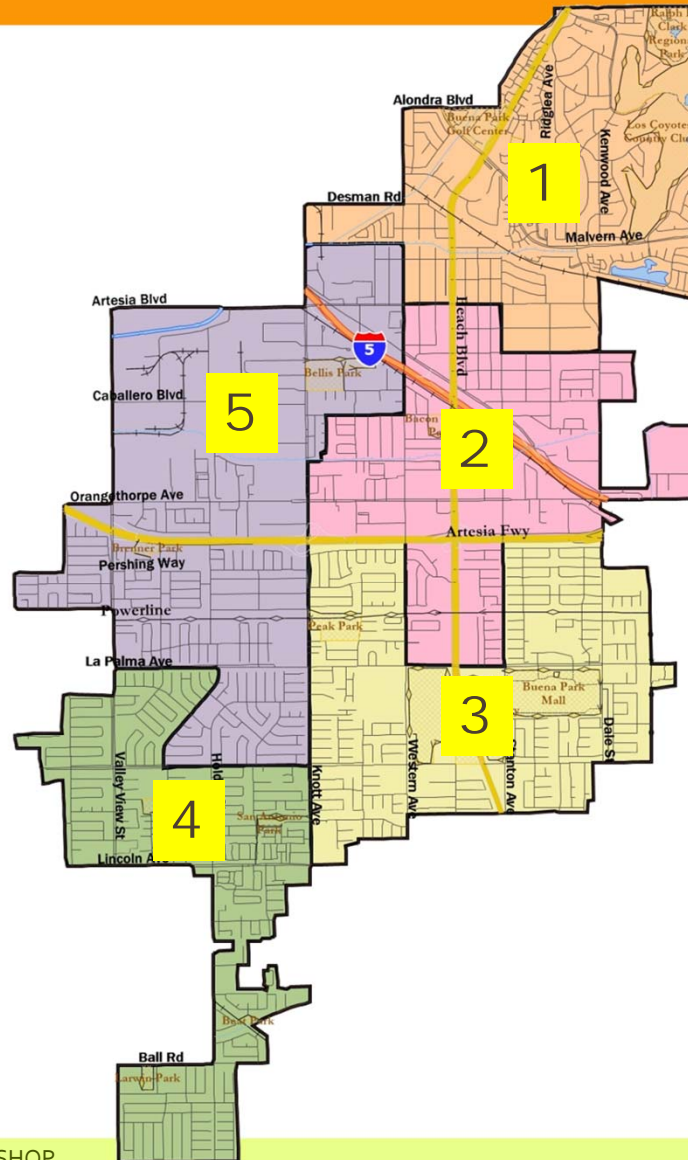
COMMUNITY WORKSHOP



HISTORY OF DISTRICTING IN BUENA PARK

- Prior to 2016, Buena Park held at-large elections for Council Members.
- 2015 City Clerk conducted extensive public outreach & invited residents to participate in the creation of voter districts.
- 2016 City Council adopted an Ordinance creating 5 voter districts in the City.
- By-district Elections held:
 - 2016 Districts 3, 4
 - 2018 Districts 1, 2, 5
 - 2020 Districts 3, 4





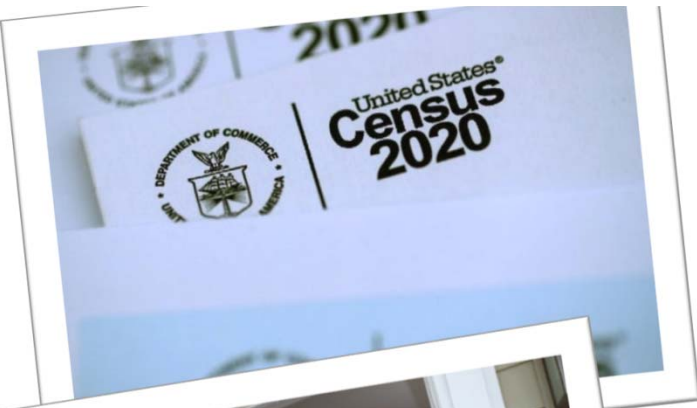


WHAT IS REDISTRICTING?



2020 CENSUS

- April 1 through October 15
- COVID 19 Impacts
- Results Released to States & Counties
 - Traditionally on April 1
 - COVID delays = mid-to-late September (9/30/21)



TIMELINE & PROCESS



Step	Description
Two Initial Hearings July 13 August 24	Held prior to release of draft maps. Public education and to solicit input on the communities in each district.
Census Data Release August 12	Census Bureau releases official 2020 Census population data.
California Data Release September 20, 2021	California Statewide Database releases California’s official ‘prisoner-adjusted’ 2020 redistricting data.
Two Draft Map Hearings January 25, 2022 March 8, 2022	Two Public Hearings to discuss and revise the draft maps and to discuss the election sequence.
Map Adoption By April 17, 2022	Final map must be posted at least 7 days prior to adoption. Map adopted via ordinance or resolution.

REDISTRICTING RULES & GOALS

FEDERAL LAWS

Equal Population

Federal Voting Rights Act

No Racial Gerrymandering

CALIFORNIA CRITERIA FOR CITIES

1. Geographically contiguous
2. Undivided neighborhoods and "communities of interest" (*Socio-economic geographic areas that should be kept together*)
3. Easily identifiable boundaries
4. Compact (*Do not bypass one group of people to get to a more distant group of people*)

PROHIBITED
SHALL NOT FAVOR OR DISCRIMINATE
AGAINST A POLITICAL PARTY.

OTHER TRADITIONAL REDISTRICTING PRINCIPLES

- Minimize voters shifted to different election years.
- Respect voters' choices / continuity in office.
- Future population growth.
- Preserving the core of existing districts

DEMOGRAPHIC SUMMARY OF EXISTING DISTRICTS

Estimates using official 2020 demographic data and NDC's estimated total population figures.

Each of the five districts must contain about 16,480 people.

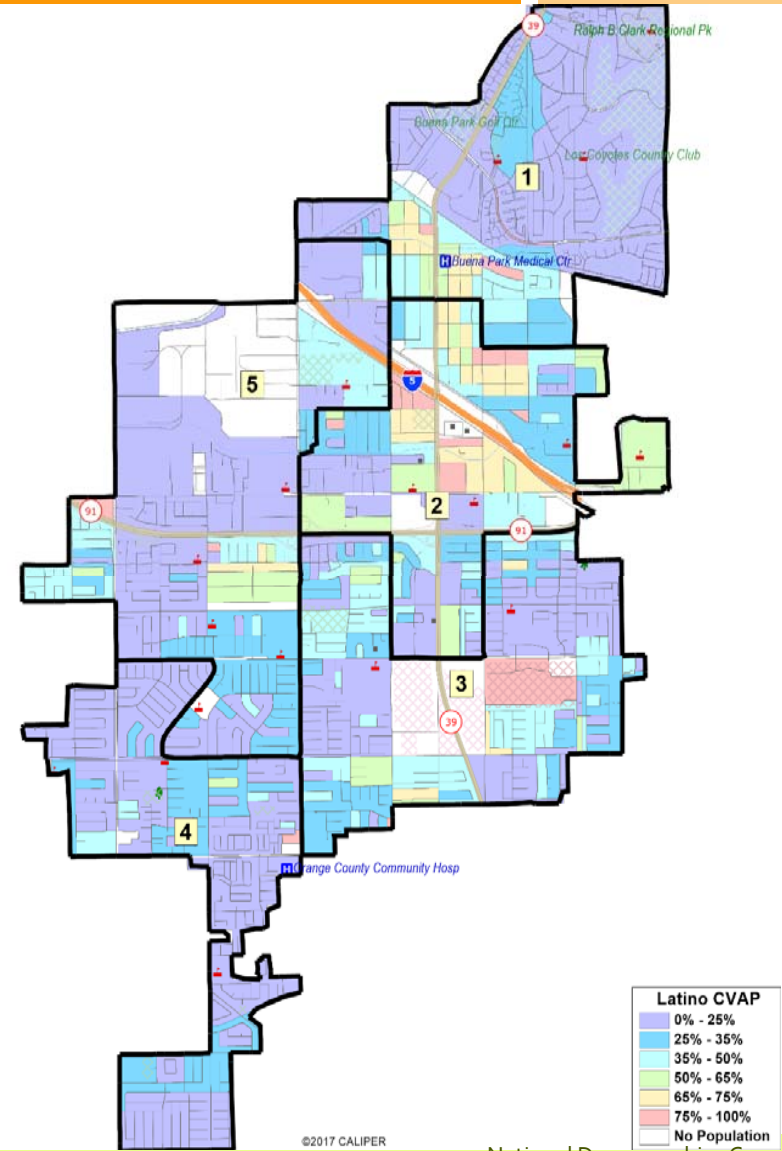
Buena Park - Current Districts

District		1	2	3	4	5	Total
2020	2020 Est. Total Pop	16,048	16,465	17,455	16,345	16,088	82,402
	Deviation from ideal	-432	-16	975	-135	-392	1,407
	% Deviation	-2.62%	-0.09%	5.91%	-0.82%	-2.38%	8.54%
2010 Total Pop	% Hisp	32%	59%	38%	26%	42%	39%
	% NH White	23%	17%	32%	39%	28%	28%
	% NH Black	3%	5%	3%	4%	3%	4%
	% Asian-American	41%	17%	25%	29%	25%	27%



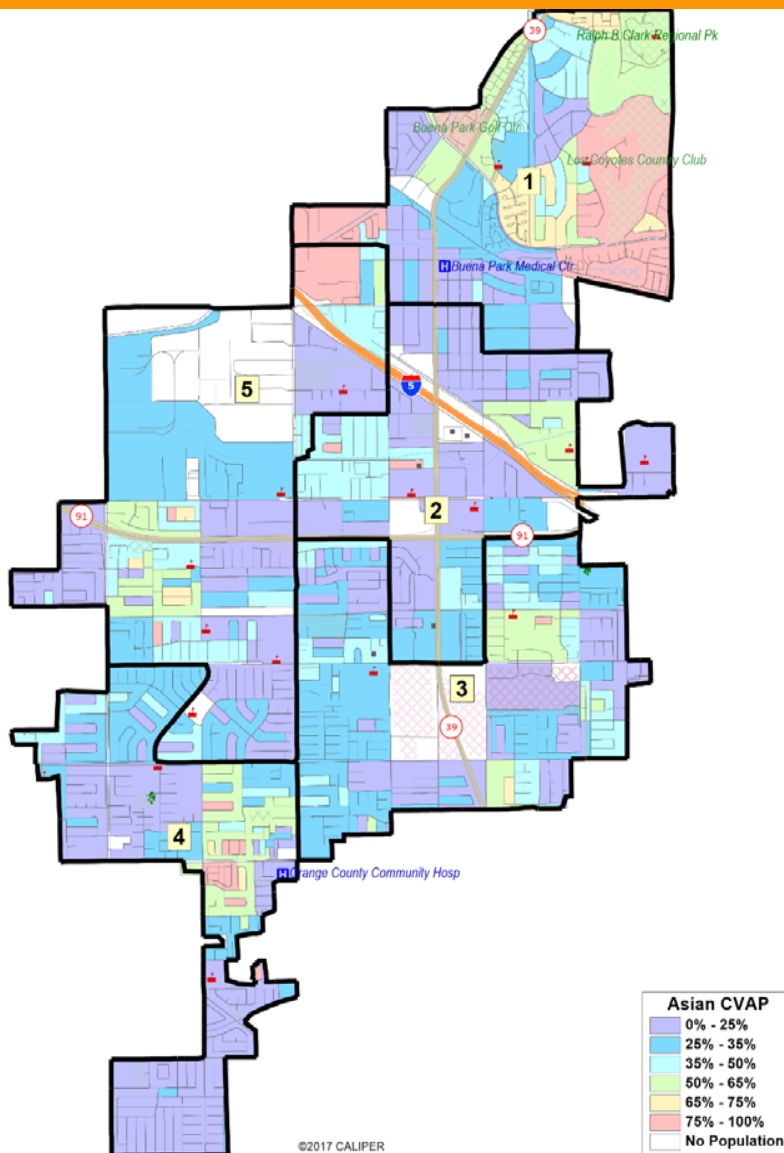
LATINO CVAP

Latinos are concentrated east of Knott Avenue between Artesia Boulevard in the north and the 91 Freeway in the south.



©2017 CALIPER

National Demographics Corp.



ASIAN-AMERICAN CVAP

Asian-Americans are concentrated north of Malvern Avenue and east of Cypress College.





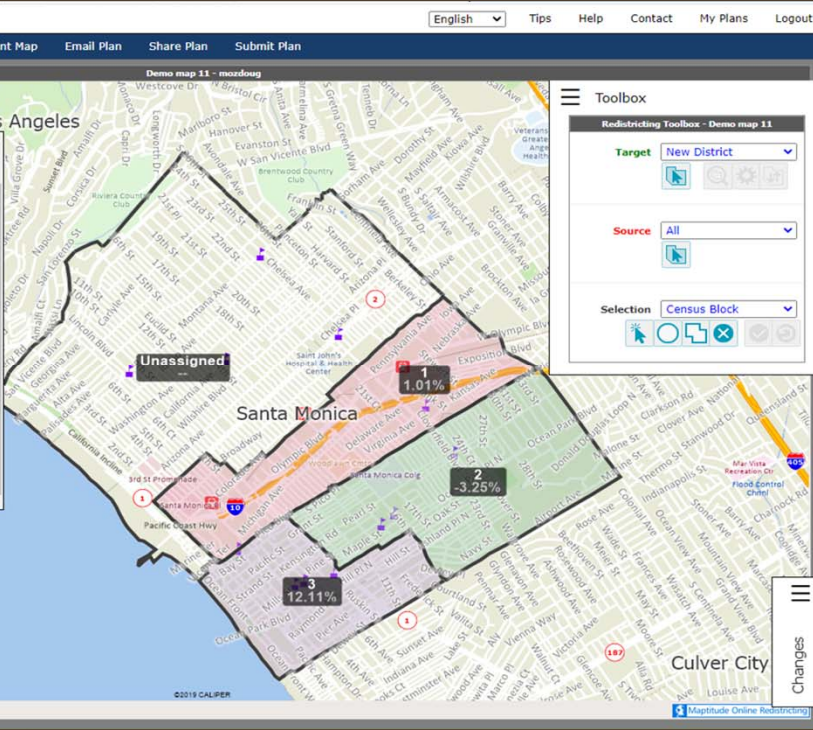
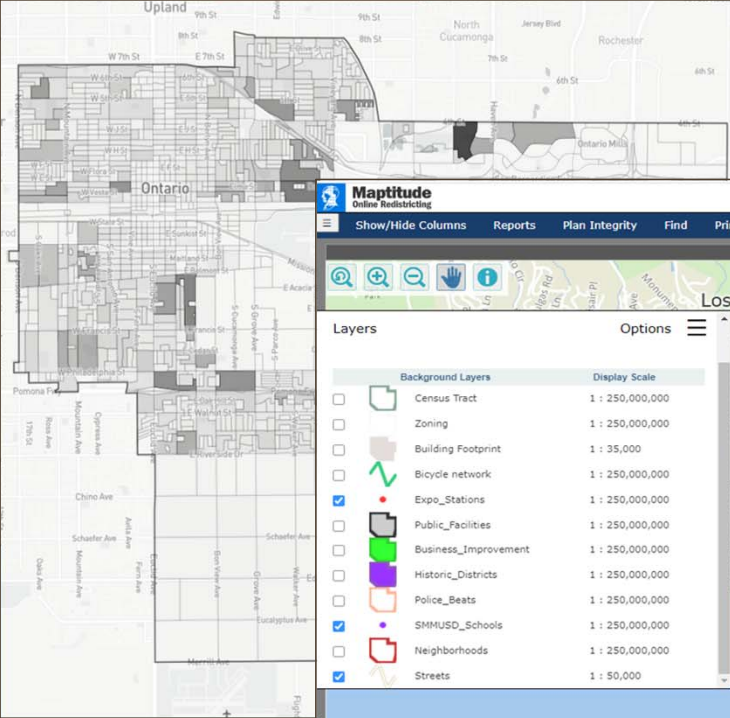
MAPPING TOOLS



Land Use and Zoning

Click below to explore how each parcel in the city is classified by land use, and zoned. The boundaries of the city itself and subareas remain for reference.

In order to find out which land use and zoning category each color symbolizes, please click the legend button at the bottom left corner.



City Land Use

This is meant to describe how each parcel in the city is actually being used. The categories are less numerous and more general.

City Zoning

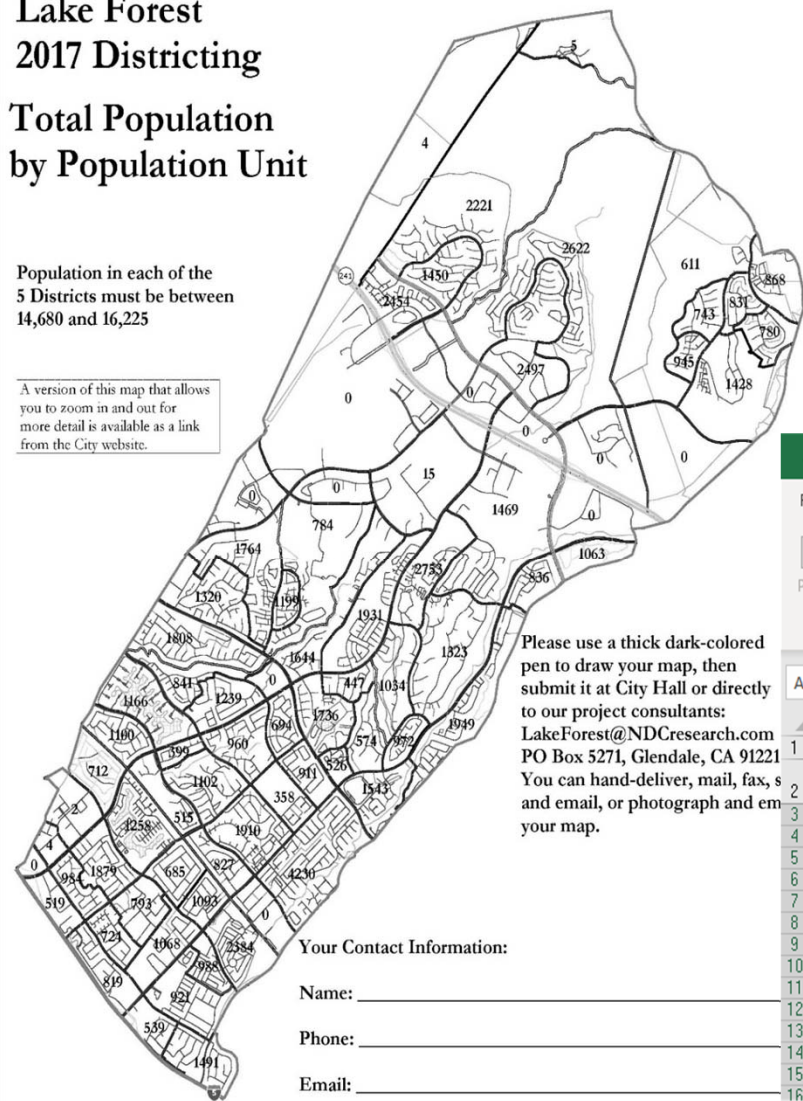
This is meant to describe how each parcel in the city is zoned.

Lake Forest 2017 Districting

Total Population by Population Unit

Population in each of the 5 Districts must be between 14,680 and 16,225

A version of this map that allows you to zoom in and out for more detail is available as a link from the City website.



Please use a thick dark-colored pen to draw your map, then submit it at City Hall or directly to our project consultants:
 LakeForest@NDCresearch.com
 PO Box 5271, Glendale, CA 91221
 You can hand-deliver, mail, fax, send email, or photograph and email your map.

Your Contact Information:

Name: _____

Phone: _____

Email: _____

AutoSave Off Lake Forest 5-district Kit_ENG.xlsx Search

File Home Insert Page Layout Formulas Data Review View Help Acrobat

Clipboard Font Alignment Number Styles

	A	B	C	D	E	F	G	H	I	J	K	L	M	N	O	P	Q	R	S	T	U	V	W	X	Y
1		Pop	Total Population					Voting Age Population					Citizen Voting Age Population					Nov. 2014 Registration				Nov. 2014 Votes			
2	District (1-7)	Unit	Tot. Pop.	Hisp	NH Wht	NH Blk	NH Asn	total	Hisp	NH Wht	NH Blk	NH Asn	tot	Hisp	NH Wht	NH Blk	NH Asn	tot	latino	asn	fil	tot	latino	asn	fil
3	1	1	1,216	612	557	18	15	873	397	442	12	831	390	441	0	0	574	195	7	3	245	63	3	1	0
4	2	2	2,367	1,128	1,053	43	96	1,784	741	899	74	1,915	730	1,140	0	45	1,299	435	14	7	555	140	6	2	0
5	3	3	1,643	1,268	278	42	25	1,036	741	236	15	400	235	145	0	20	505	286	3	4	161	73	1	1	3
6	4	4	1,768	734	855	62	84	1,272	464	685	62	1,231	461	639	19	111	1,022	366	11	11	391	89	0	4	9
7	5	5	2,001	209	1,655	14	79	1,639	144	1,392	64	1,511	88	1,337	12	38	1,776	146	46	7	1,089	67	21	4	2
8	6	6	612	56	499	4	39	517	37	440	26	471	22	423	3	15	525	38	15	2	337	18	8	1	1
9	7	7	1,753	1,180	501	20	10	1,245	767	424	10	780	335	440	2	0	727	328	7	4	241	79	3	0	0
10	8	8	2,321	665	1,509	34	76	1,838	426	1,302	55	1,742	418	1,259	10	25	1,473	272	23	2	762	87	14	2	1
11	9	9	1,476	1,145	265	13	34	997	714	228	25	667	414	240	0	0	350	168	3	3	114	43	1	0	0
12	10	10	562	62	454	10	33	470	41	392	27	434	23	343	22	37	441	45	8	1	269	23	4	1	3
13	11	11	736	122	549	23	33	691	101	536	28	771	65	609	27	70	534	102	8	4	300	46	1	1	1
14	12	12	1,628	1,271	265	19	44	1,073	779	221	34	664	430	230	4	0	455	239	3	5	147	67	1	1	8
15	13	13	0	0	0	0	0	0	0	0	0	0	0	0	0	0	37	12	0	0	16	4	0	0	3
16	14	14	3,636	2,345	1,105	77	43	2,677	1,538	991	36	2,035	1,085	850	2	74	1,247	439	13	10	455	116	5	1	0

COMMUNITIES OF INTEREST



DEFINING YOUR COMMUNITIES



A “community of interest” is a population that shares common social or economic interests *that should be included within a single district for purposes of its effective and fair representation.*

Some ways to describe your community:

- ✓ Geographic (waterways, rural, urban, mountains).
- ✓ Boundaries (cities, towns, counties, school areas).
- ✓ Things you have in common with your neighbors, other families at your children’s school or sports clubs.

TELL US ABOUT YOUR COMMUNITY



ORAL TESTIMONY



WRITTEN TESTIMONY



COMMUNITY ISSUES



WWW.REDISTRIBCTBP.ORG



STATE OF CALIFORNIA

ORANGE COUNTY

SPECIAL DISTRICTS



QUESTIONS??



ADRIA JIMENEZ, CITY CLERK



(714) 562-3750



ajimenez@buenapark.com



redistrictbp@buenapark.com



www.redistrictbp.org