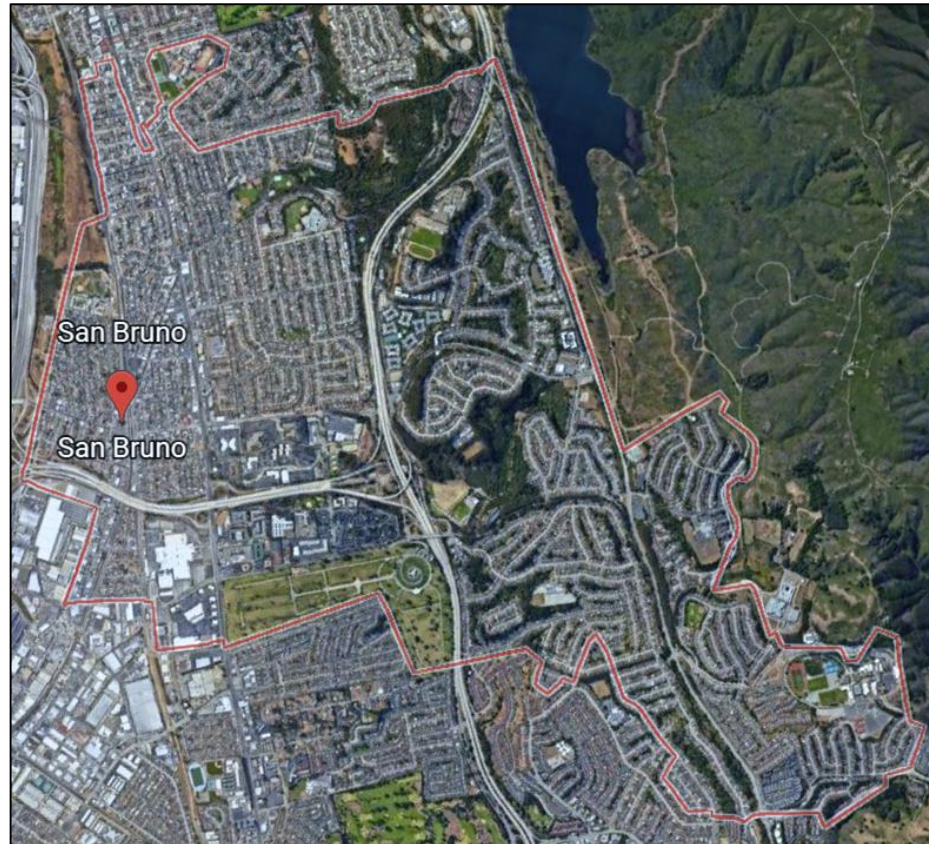


City of San Bruno



Districting Public Hearing #2

Election Systems

1. “At-Large”

Currently, San Bruno uses an “at-large” system to elect city councilmembers

2. “From District” or “Residence” Districts

3. “By-District”

On March 10, 2020, San Bruno adopted a resolution of intent to transition to by-district elections

California Voting Rights Act (CVRA)

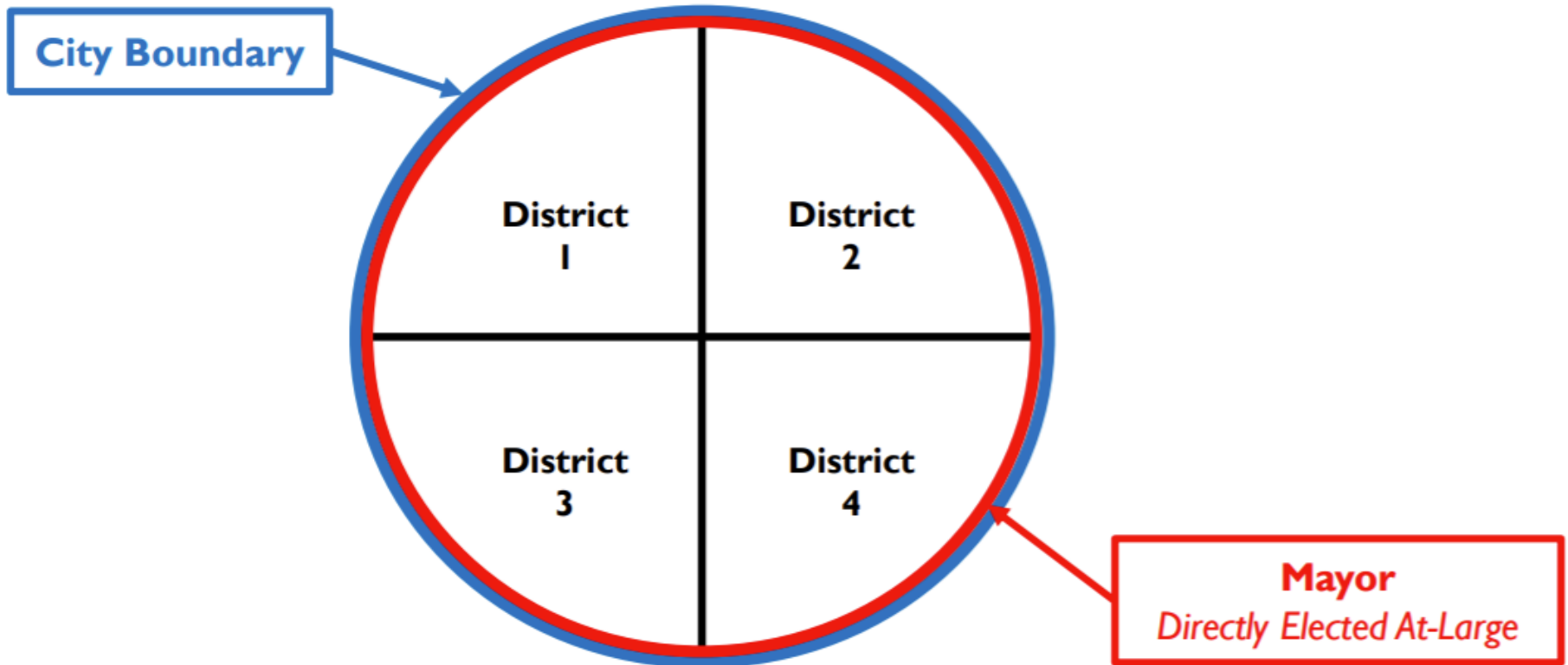
- ❑ Written to specifically encourage “by-district” elections
- ❑ Makes it significantly easier for plaintiffs to force jurisdictions into “by-district” election systems
- ❑ Liability determined only by the presence of racially polarized voting
- ❑ **San Bruno avoided potentially costly litigation by proactively adopting a resolution to transition to “by-district” elections**

San Bruno's Transition to Districts

- ❑ San Bruno currently has a directly-elected mayor and a 4-member City Council *
- ❑ It is currently proposed that there will be four City Council districts and a Mayor elected at-large, so beginning in 2022 each resident would vote for a Council Member to represent their specific district plus a Mayor to represent the City as a whole.

*** Voter approval may be required to alter this structure (established by Prop F in 1977)**

San Bruno's Transition to Districts



Why Community Members Should Care

- ❑ Democracy works better when people are engaged.
- ❑ Residents know their communities and neighborhoods best.
- ❑ Opportunity to ensure fair and equal representation for all community members.
- ❑ The way district lines are drawn will determine which neighborhoods and communities are represented by each Council Member.

Process Goals

Community Members Learn From the Experts

Experts Listen to the Community

**Community Members Are Empowered to Give
Effective Feedback**

Districting Timeline

Step	Description
Census Data Release August 12, 2021	Census Bureau releases official 2020 Census population data
California Data Release September 20, 2021	California Statewide Database releases official 'prisoner-adjusted' 2020 redistricting data
Two Initial Hearings September 28, 2021 October 19, 2021	Held prior to release of draft maps to receive public input on the composition of districts
Community Workshops Nov. 1 & TBD	Informational presentation and demo of public mapping tools
November 2021 – January 2022	Time for the public to draw and submit maps
Two Hearings on Maps January 25, 2022 February 22, 2022	Two meetings to discuss and revise the draft maps and to discuss the election sequence

Districting Timeline (cont.)

Step	Description
Public Hearing 5 - Introduction March 8, 2022	First reading/introduction of ordinance
Public Hearing 6 - Adoption March 22, 2022	Second reading/adoption of ordinance. Final map must be posted at least 7 days prior to adoption. Second reading/adoption is at least five days after introduction.

Legal Criteria for Districts

1. Federal Law

- ✓ Ensure equal population
- ✓ Comply with federal Voting Rights Act
- ✓ Prevent racial gerrymandering

2. California Law

1. Ensure geographic **contiguity**
 2. Minimize division of neighborhoods & **“communities of interest”**
 3. Create easily identifiable boundaries
 4. Maintain **compactness**
- ✓ Do not “favor or discriminate against a political party”

3. Other Goals

- Minimize changes to election cycles
- Respect voters’ choices
- Anticipate future growth

Do not bypass a nearby population to take in a more distant population

Demographic Summary

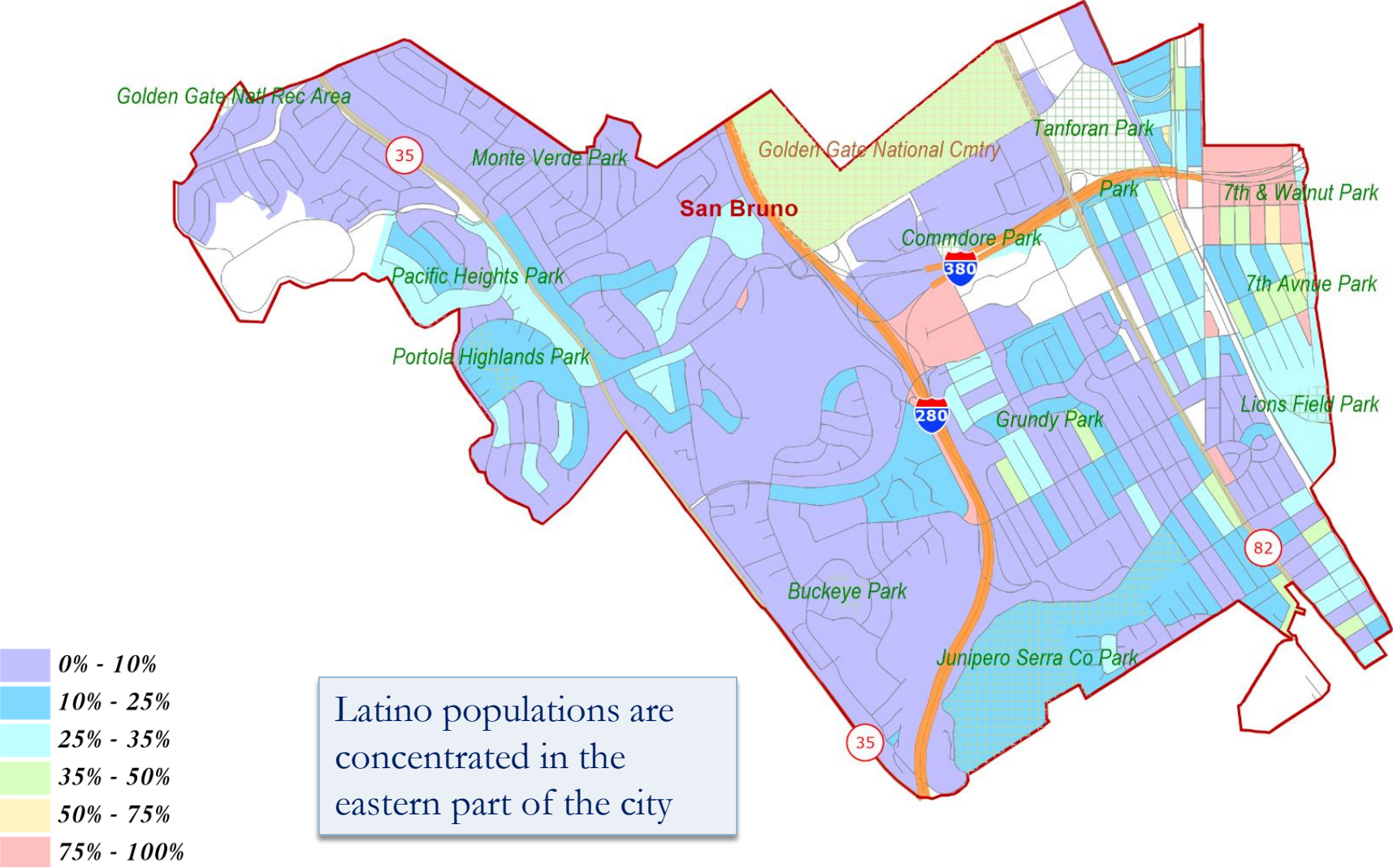
City of San Bruno - 2020 Census		
2020	Total Population	43,908
	% Hisp	28%
	% NH White	30%
	% NH Black	2%
	% Asian-American	35%
Citizen Voting Age Pop (CVAP)	Total CVAP	29,777
	% Hisp	23%
	% NH White	38%
	% NH Black	1%
	% Asian/Pac.Isl.	36%
Age	age0-19	21%
	age20-60	59%
	age60plus	21%
Immigration	immigrants	37%
	naturalized	67%
Language spoken at home	english	50%
	spanish	19%
	asian-lang	19%
	other lang	12%

Ideal District Size: Each district must contain about 10,977 people

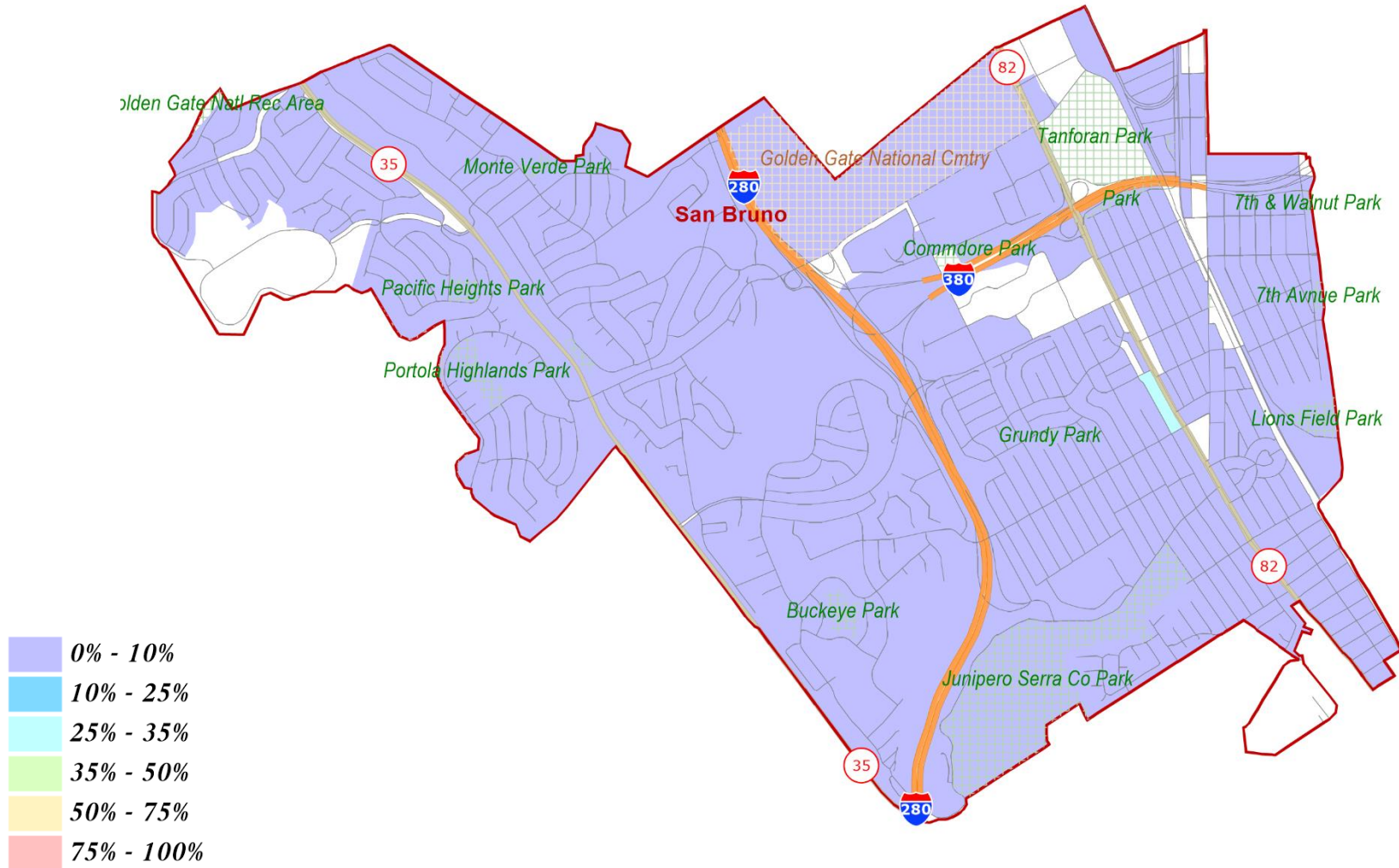
Child in Household	child-under18	31%
Household Income	income 0-25k	9%
	income 25-50k	12%
	income 50-75k	10%
	income 75-200k	50%
	income 200k-plus	19%
Housing Stats	single family	59%
	multi-family	35%
	rented	41%
	owned	59%

Total population data from the 2020 Decennial Census. Citizen Voting Age Pop., Age, Immigration, and other demographics from the 2015-2019 American Community Survey and Special Tabulation 5-year data.

Latino CVAP

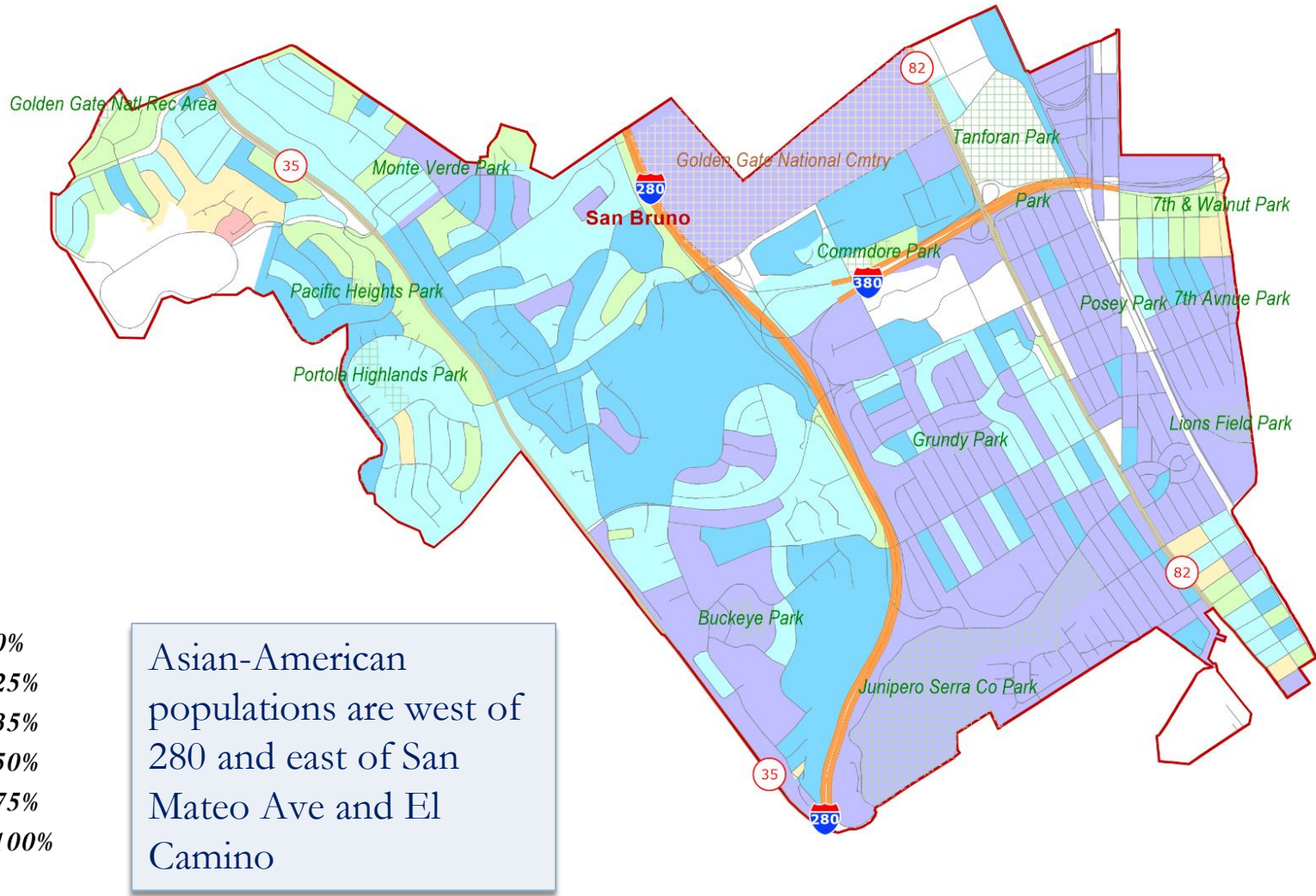


African-American CVAP



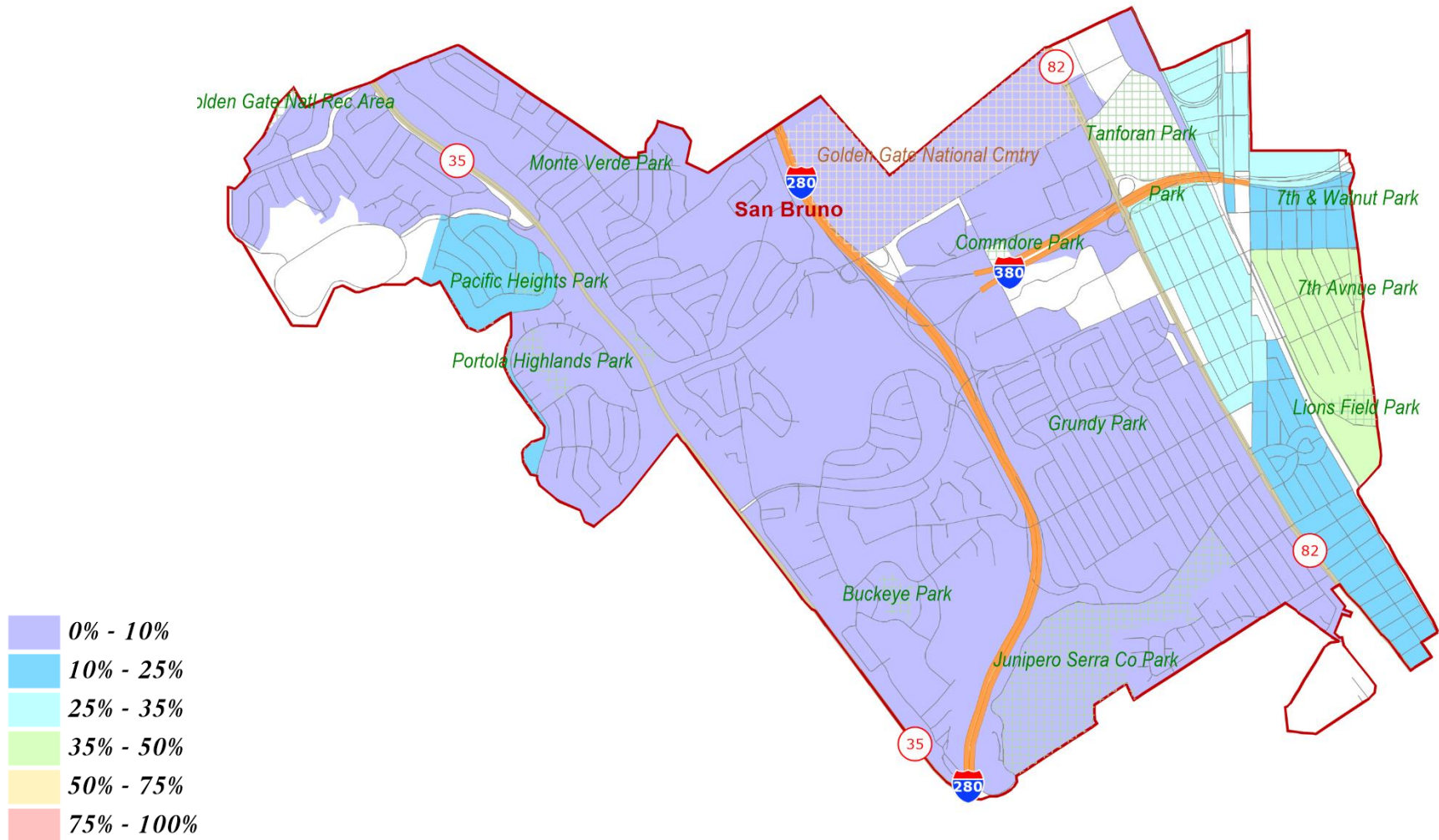
©2017 CALIPER

Asian-American CVAP



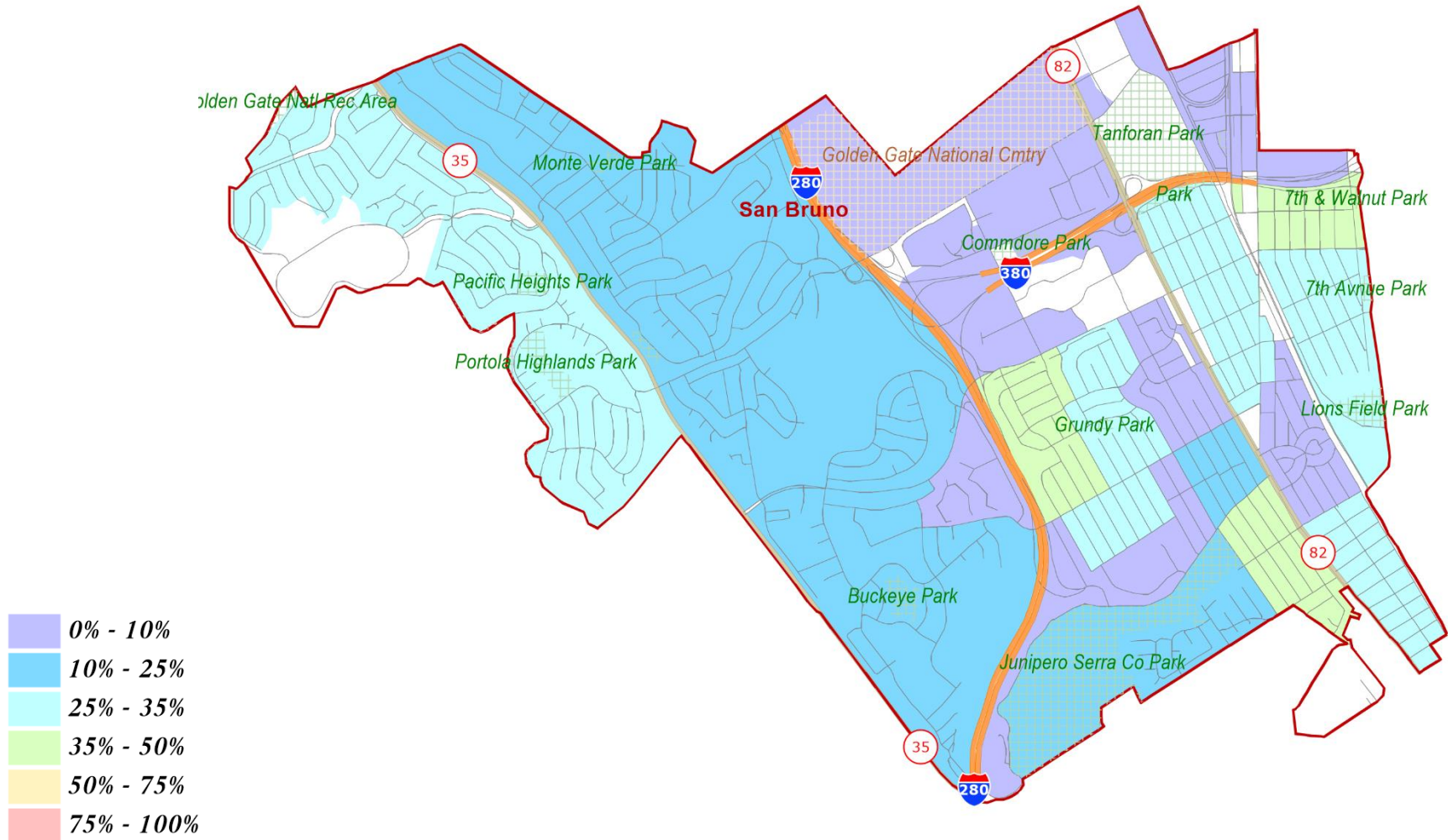
©2017 CALIPER

Speak Spanish at Home



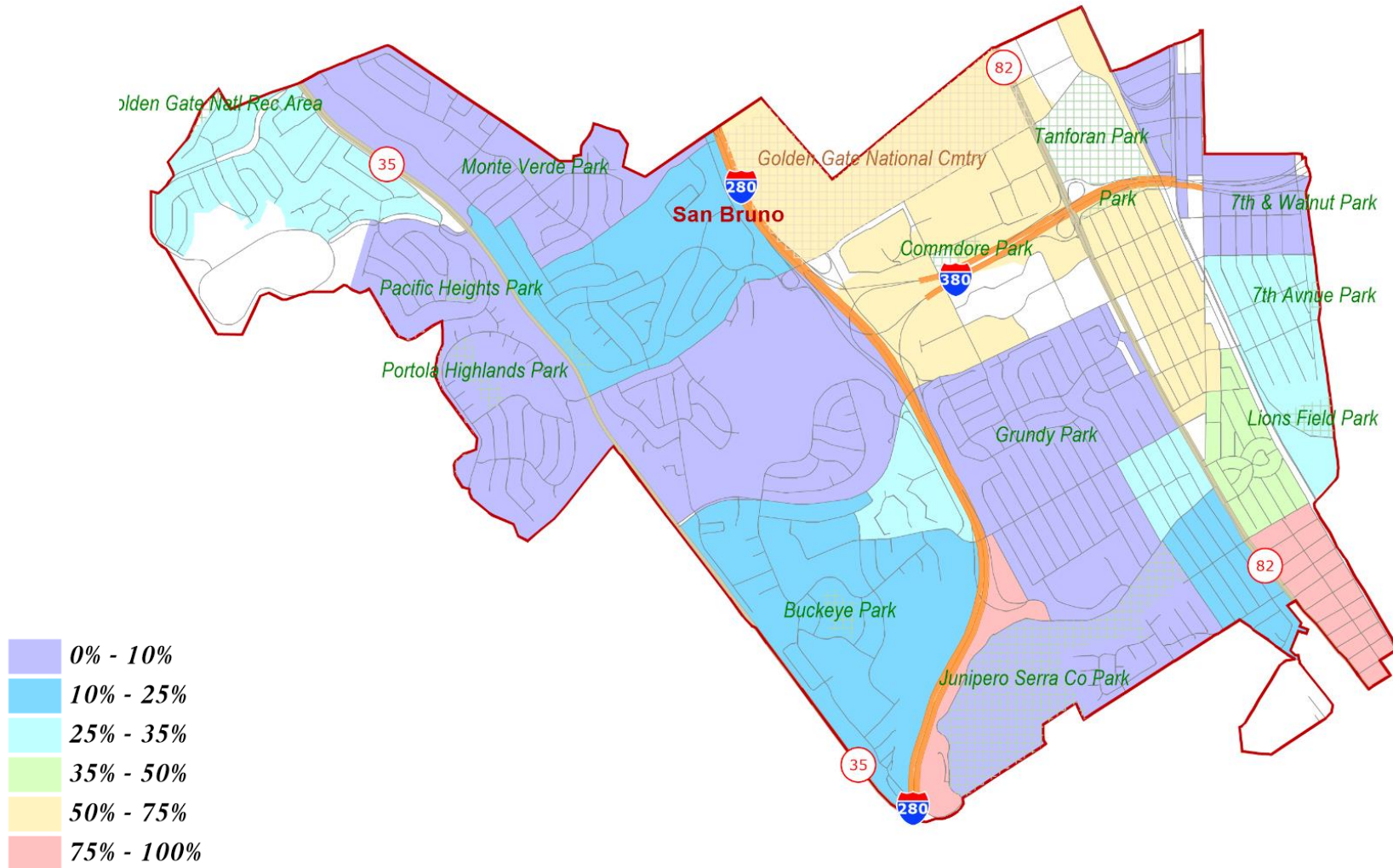
©2017 CALIPER

Children at Home



©2017 CALIPER

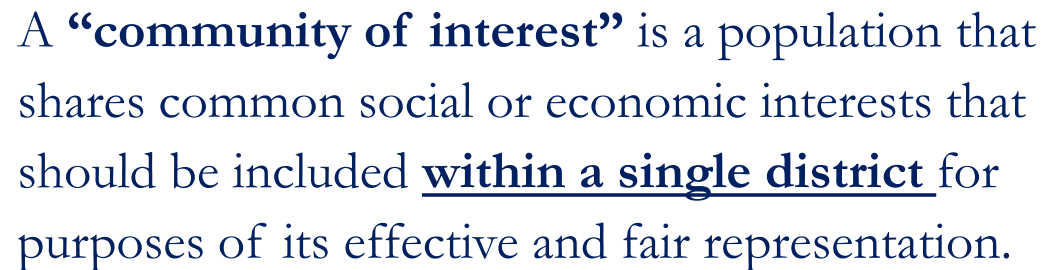
Renters



©2017 CALIPER

Beyond Neighborhoods: Defining “Communities of Interest”

Under California Elections Code, “community of interest” has a very specific definition in the context of redistricting:



A “community of interest” is a population that shares common social or economic interests that should be included within a single district for purposes of its effective and fair representation.

Definitions of “communities of interest” do **not** include relationships with political parties, incumbents, or political candidates.

What Defines YOUR Community?

Ask yourself...

What brings us together?

- Common social or economic interests
- Shared characteristics or experiences
- Similar issues or impacts of city policies

+

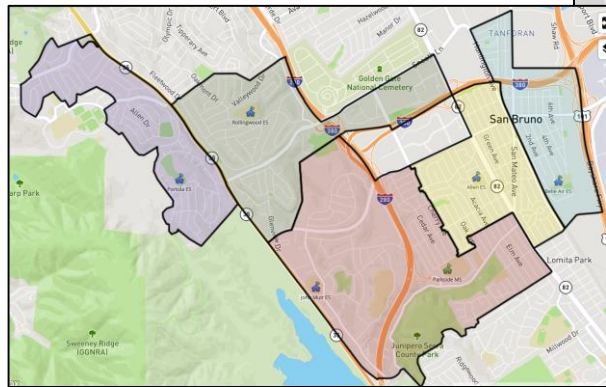
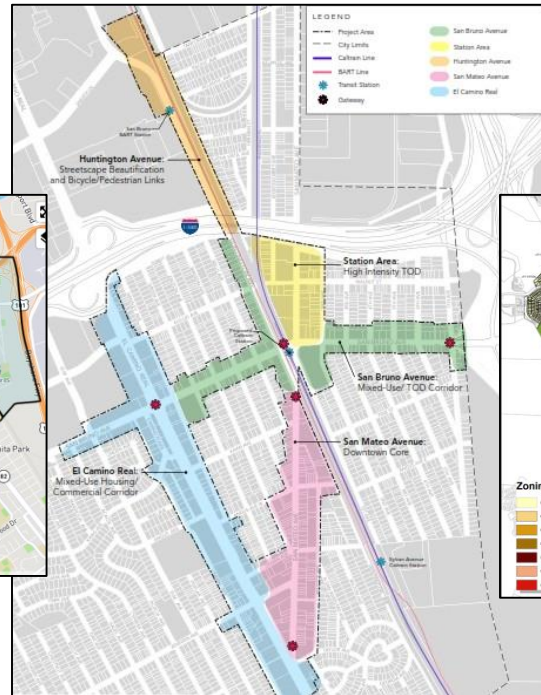
Where are we?

- Physical boundaries, such as highways or major roads, waterways, hills, etc.
- Areas around parks, schools, or other landmarks

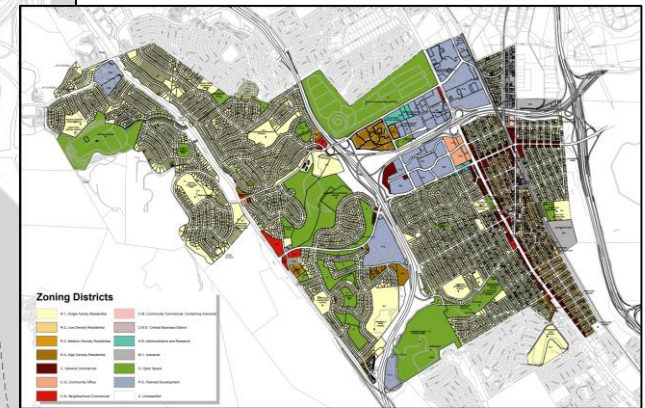
Would my community be best represented within a single district?

Possible Neighborhoods / Communities

Transit Corridors



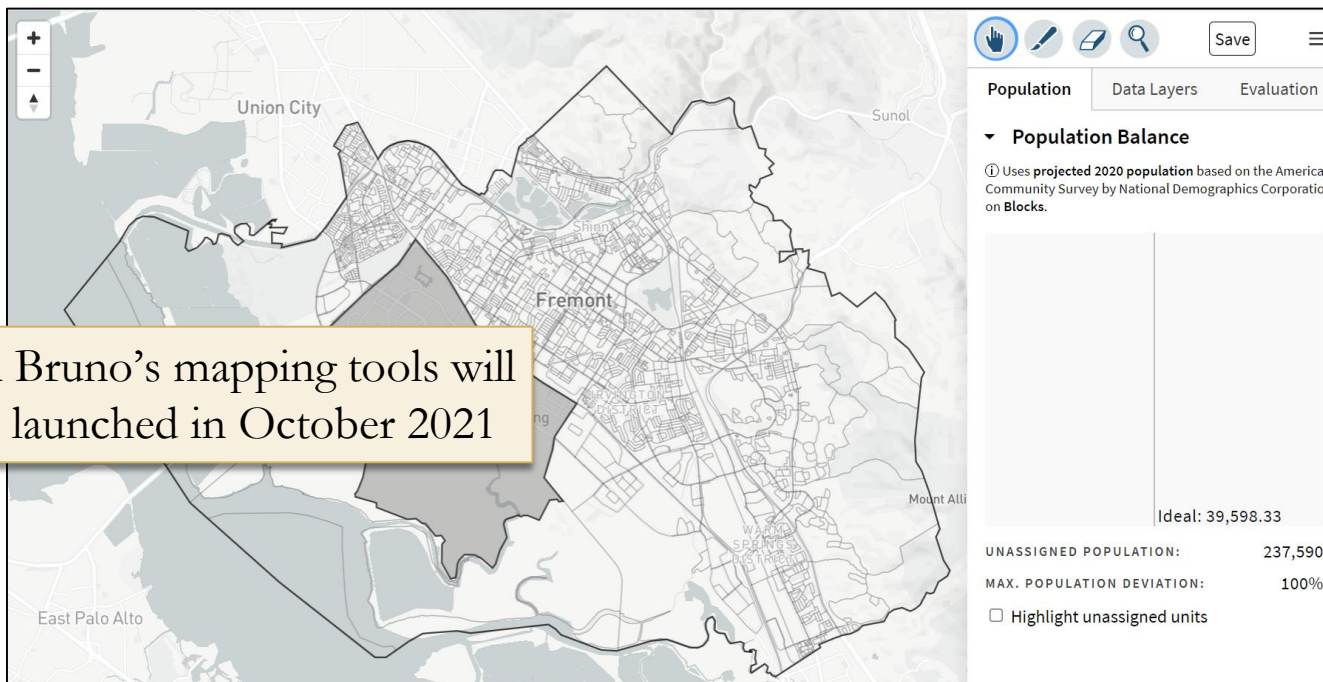
School Attendance Zones



Zoning Areas

Public Mapping Tools

1. **Paper Participation Kit:** Paper- and Excel-based map drawing tools
2. **DistrictR:** Easy-to-use online map drawing tool



Outreach

- **Dedicated Website (shown on next slide)**
- **Email Outreach**
- **Social Media**
- **Media Engagement**
- **CityNet**
- **Print Flyers**
- **Community Workshops**

Multiple languages available

We invite you to share this information with your friends and neighbors to help inform the process!

Discussion

What is your neighborhood and what are its boundaries?

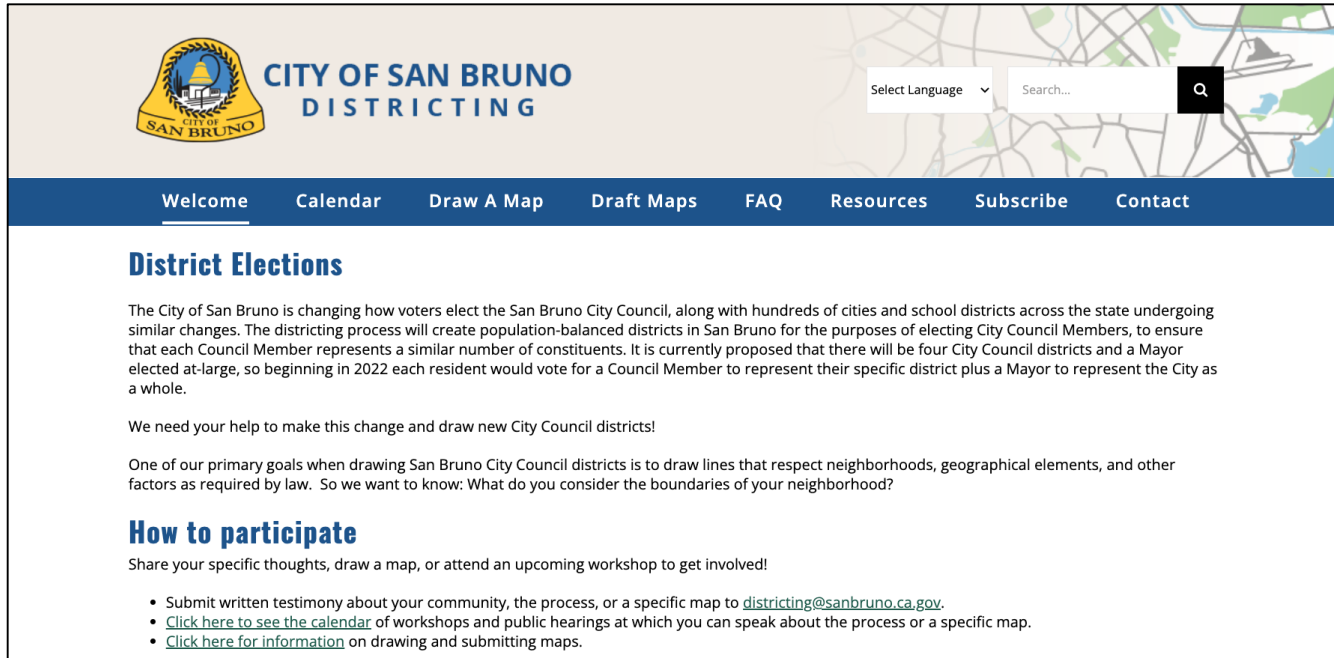
What other notable areas are in the City, and what are their boundaries?

Any questions about the mapping tools?

Discussion to identify:

- “neighborhoods”
- “communities of interest . . . that should be included within a single district for purposes of its effective and fair representation.”

Share Your Thoughts/Continue Engagement



CITY OF SAN BRUNO
DISTRICTING

Select Language Search...

Welcome Calendar Draw A Map Draft Maps FAQ Resources Subscribe Contact

District Elections

The City of San Bruno is changing how voters elect the San Bruno City Council, along with hundreds of cities and school districts across the state undergoing similar changes. The districting process will create population-balanced districts in San Bruno for the purposes of electing City Council Members, to ensure that each Council Member represents a similar number of constituents. It is currently proposed that there will be four City Council districts and a Mayor elected at-large, so beginning in 2022 each resident would vote for a Council Member to represent their specific district plus a Mayor to represent the City as a whole.

We need your help to make this change and draw new City Council districts!

One of our primary goals when drawing San Bruno City Council districts is to draw lines that respect neighborhoods, geographical elements, and other factors as required by law. So we want to know: What do you consider the boundaries of your neighborhood?

How to participate

Share your specific thoughts, draw a map, or attend an upcoming workshop to get involved!

- Submit written testimony about your community, the process, or a specific map to districting@sanbruno.ca.gov.
- [Click here to see the calendar](#) of workshops and public hearings at which you can speak about the process or a specific map.
- [Click here for information](#) on drawing and submitting maps.

Come to the first Community Workshop: **Nov. 1 at 7 p.m.**

Click “Subscribe” on [DistrictingSanBruno.org](https://www.districtingsanbruno.org) to sign up for updates

Email: districting@sanbruno.ca.gov