

City of Cypress

Introduction to Districting

January 29, 2024

Dr. Justin Levitt, Vice-President
National Demographics Corporation

Election Systems

1. “At Large”
2. “From District” or “Residence” Districts
3. “By District”

The California Voting Rights Act
was written to specifically
encourage by-district elections.

California Voting Rights Act (CVRA)

- ❑ Under the Federal Voting Rights Act (passed in 1965), a jurisdiction must fail 4 factual tests before it is in violation of the law.
- ❑ The California VRA makes it significantly easier for plaintiffs to force jurisdictions into “by-district” election systems by eliminating two of the US Supreme Court Gingles tests:
 - ~~❑ Can the protected class constitute the majority of a district?~~
 - ❑ Does the protected class vote as a bloc?
 - ❑ Do the voters who are not in the protected class vote in a bloc to defeat the preferred candidates of the protected class?
 - ~~❑ Do the “totality of circumstances” indicate race is a factor in elections?~~
- ❑ Liability is now determined only by the presence of racially polarized voting and dilution of the protected class’s voting strength

CVRA Impact

❑ Switched (or in the process of switching) as a result of CVRA:

- ❑ At least 240 school districts
- ❑ 34 Community College Districts
- ❑ 160+ cities
- ❑ 1 County Board of Supervisors
- ❑ Over 50 special districts.

❑ Cases So Far:

- ❑ Palmdale, Santa Clara and Santa Monica went to trial on the merits. Palmdale and Santa Clara lost. Santa Monica is awaiting a decision.
- ❑ Modesto and Palmdale each spent about \$1.8 million on their defense (in addition to the attorney fee awards in those cases).
- ❑ Santa Monica has spent an estimated \$7 million so far. Plaintiffs in Santa Monica requested \$22 million in legal fees after the original trial.

❑ Sample settlements:

- ❑ Palmdale: \$4.7 million
 - ❑ Modesto: \$3 million
 - ❑ Highland: \$1.3 million
 - ❑ Anaheim: \$1.1 million
 - ❑ Whittier: \$1 million
 - ❑ Santa Barbara: \$600,000
 - ❑ Tulare Hospital: \$500,000
 - ❑ Camarillo: \$233,000
 - ❑ Compton Unified: \$200,000
 - ❑ Madera Unified: about \$170,000
 - ❑ Hanford Joint Union Schools: \$118,000
 - ❑ Merced City: \$42,000
- ❑ **An estimated \$16 million in total settlements and court awards so far.**

Districting Process

Step	Description
Two Initial Hearings January 22 & January 29	Held prior to release of draft maps. Education and to solicit input on the composition of districts.
Release draft maps February 5	Maps must be posted at least 7 days prior to 3 rd hearing.
Two hearings on draft maps February 12 & February 26	Two meetings to discuss and revise the draft maps and to discuss the election sequence.
Map adoption	Map adopted via ordinance or resolution. Final map must be posted at least 7 days prior to adoption.

Districting Rules and Goals

1. Federal Laws

Equal Population
Federal Voting Rights Act
No Racial Gerrymandering



2. California Criteria

In prioritized order:

1. **Geographically contiguous**
2. **Undivided neighborhoods and “communities of interest”**
(Socio-economic geographic areas that should be kept together)
3. **Easily identifiable boundaries**
4. **Compact**
(Do not bypass one group of people to get to a more distant group of people)

3. California Prohibition

“Shall not adopt election district boundaries for the purpose of favoring or discriminating against an incumbent, political candidate, or political party.”

4. Other Traditional Districting Principles

Future population growth

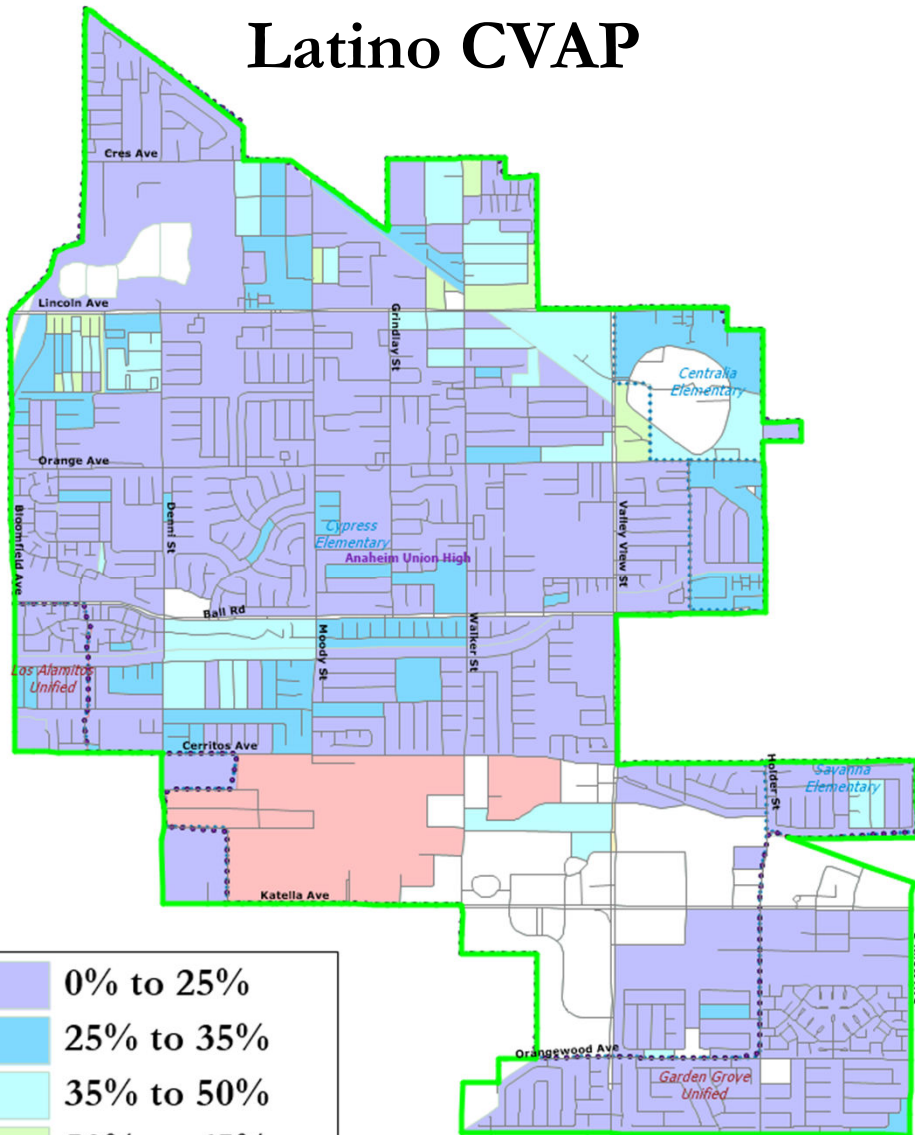
Demographic Summary

Each of the 5 districts must contain about 10,057 people.

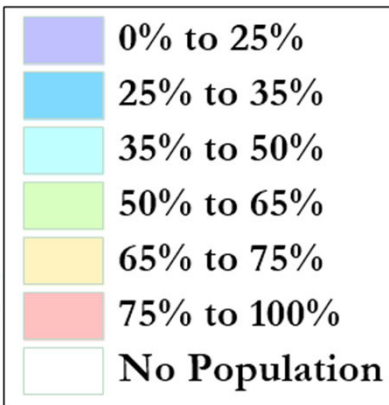
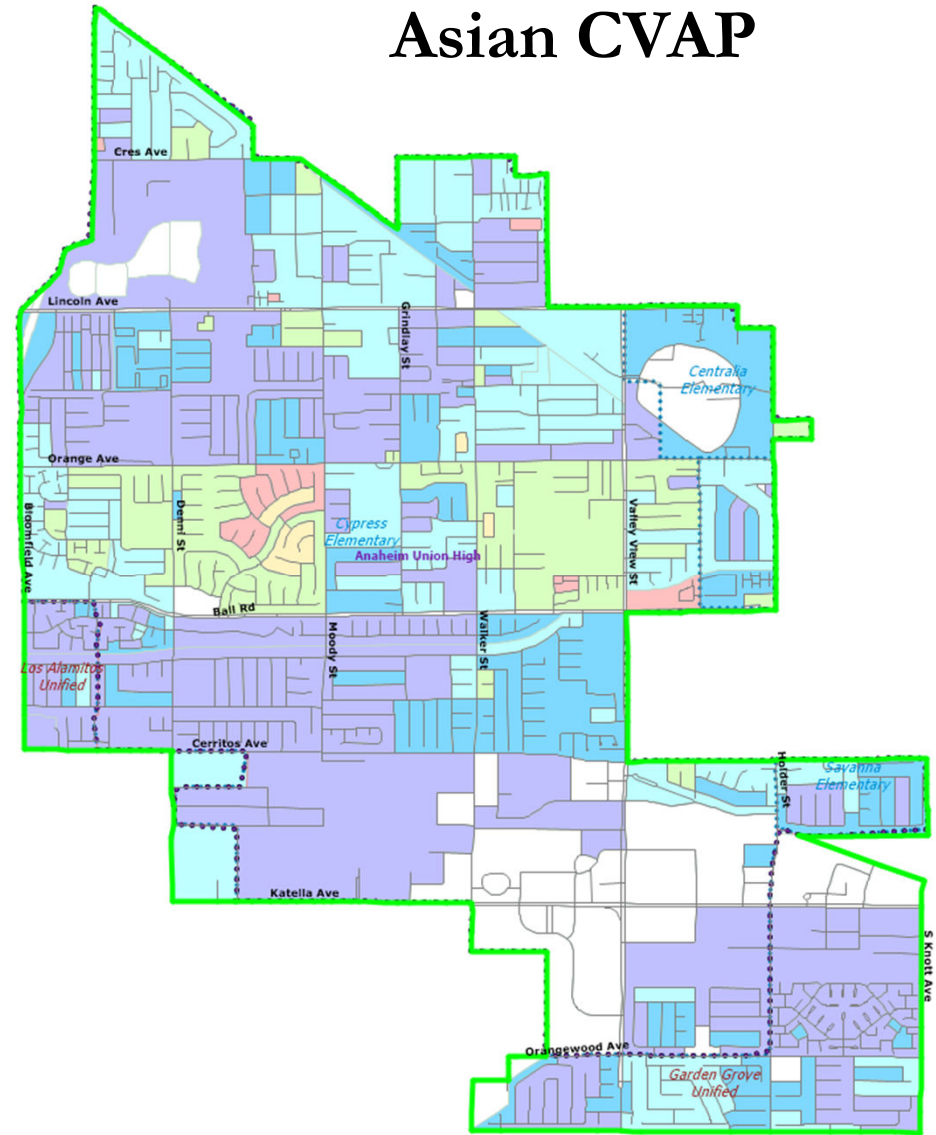
Category	Field	Total	Category	Field	Total
2020 Census	Total Population	50,235	Age	age0-19	26%
Total Pop.	Hispanic/Latino	21%		age20-60	52%
	NH White	33%		age60plus	22%
	NH Black	4%	Immigration	immigrants	30%
	NH Asian/Pac.Isl.	40%		naturalized	64%
	NH Native Amer.	1%	Language spoken at home	english	57%
Citizen Voting Age Pop	Total	33,010		spanish	11%
	Hisp	18%		asian-lang	26%
	NH White	43%		other lang	6%
	NH Black	3%	Language Fluency	Speaks Eng. "Less than Very Well"	16%
	Asian/Pac.Isl.	34%	Education (among those age 25+)	hs-grad	42%
	Native Amer.	1%		bachelor	31%
Voter Registration (Nov 2022)	Total	30,863		graduatedegree	18%
	Latino est.	20%	Child in Household	child-under18	38%
	Spanish-Surnamed	18%	Pct of Pop. Age 16+	employed	64%
	Asian-Surnamed	20%	Household Income	income 0-25k	9%
	Filipino-Surnamed	3%		income 25-50k	11%
	NH White est.	53%		income 50-75k	11%
Voter Turnout (Nov 2022)	NH Black	4%		income 75-200k	52%
	Total	17,146		income 200k-plus	16%
	Latino est.	17%	Housing Stats	single family	80%
	Spanish-Surnamed	15%		multi-family	20%
	Asian-Surnamed	18%		rented	30%
	Filipino-Surnamed	2%		owned	70%
Voter Turnout (Nov 2020)	NH White est.	59%	Total population data from California's adjusted 2020 Census data. Citizen Voting Age Population, Age, Immigration, and other demographics from the 2017-2021 American Community Survey and Special Tabulation 5-year data. Turnout and Registration data from California Statewide Database. "Latino" figures calculated by NDC using Census Bureau's Latino undercount by surname estimate.		
	NH Black	4%			
	Total	26,171			
	Latino est.	19%			
	Spanish-Surnamed	17%			
	Asian-Surnamed	18%			
	Filipino-Surnamed	3%			
	NH White est.	57%			
	NH Black est.	4%			

Latino & Asian CVAP

Latino CVAP



Asian CVAP



Asians are concentrated between Orange Ave. and Ball Rd. There is some slight Latino concentrations along Lincoln Ave. and Katella Ave.

Defining Neighborhoods

1st Question: How do you describe or name the area where you live?

2nd Question: What are its geographic boundaries?

What other neighborhoods are there?

Examples of physical features defining a neighborhood boundary:

- Natural neighborhood dividing lines, such as highway or major roads, rivers, canals and/or hills
- Areas around parks or schools
- Other neighborhood landmarks



Defining Communities of Interest

California Elections Code Section 21130(c)(2):

A “community of interest” is a population that shares common social or economic interests that should be included within a single district for purposes of its effective and fair representation.

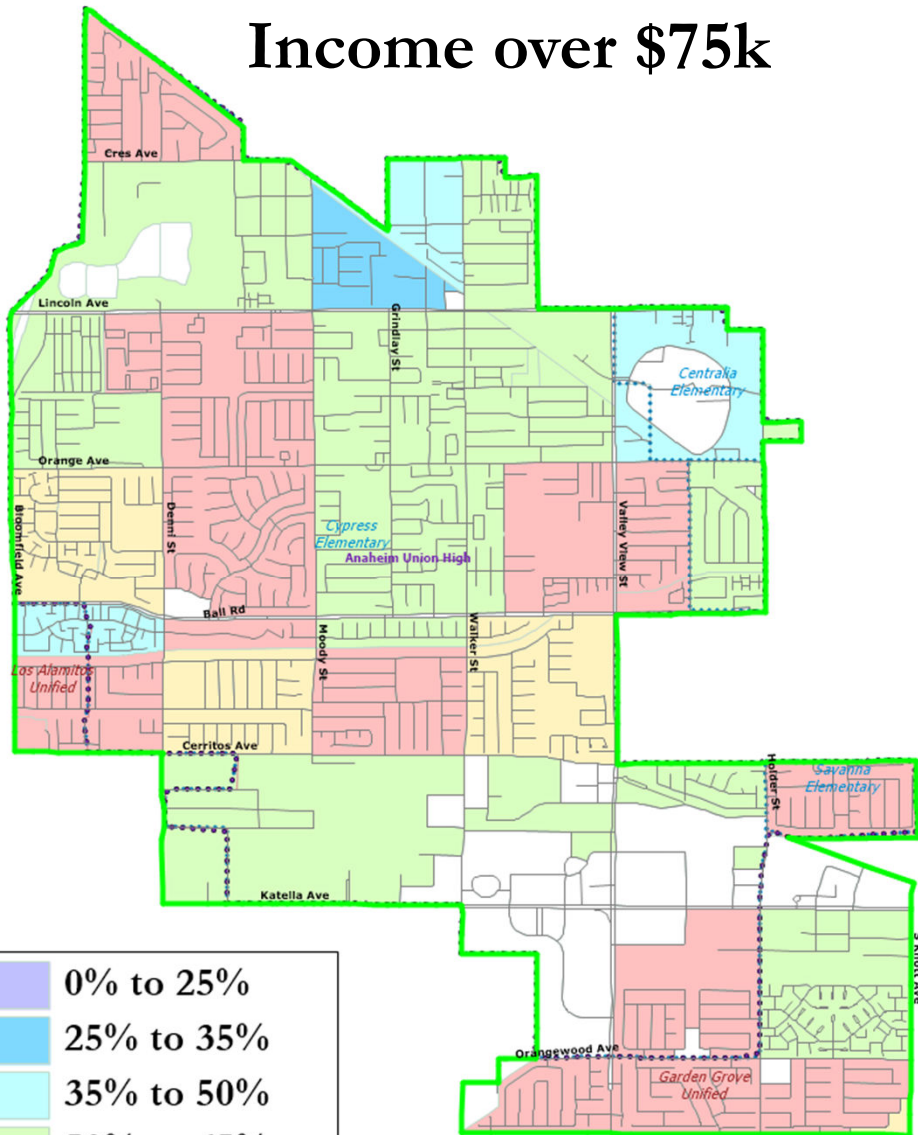
The shared interests may include (but are not limited to):

- ❑ Shared public policy concerns such as education, public safety, public health, environment, housing, transportation, and access to social services. cultural districts;
- ❑ Shared socioeconomic characteristics;
- ❑ Similar voter registration rates and participation rates; and /or
- ❑ Shared histories.

Definitions of Communities of Interest may not include relationships with political parties, incumbents, or political candidates.

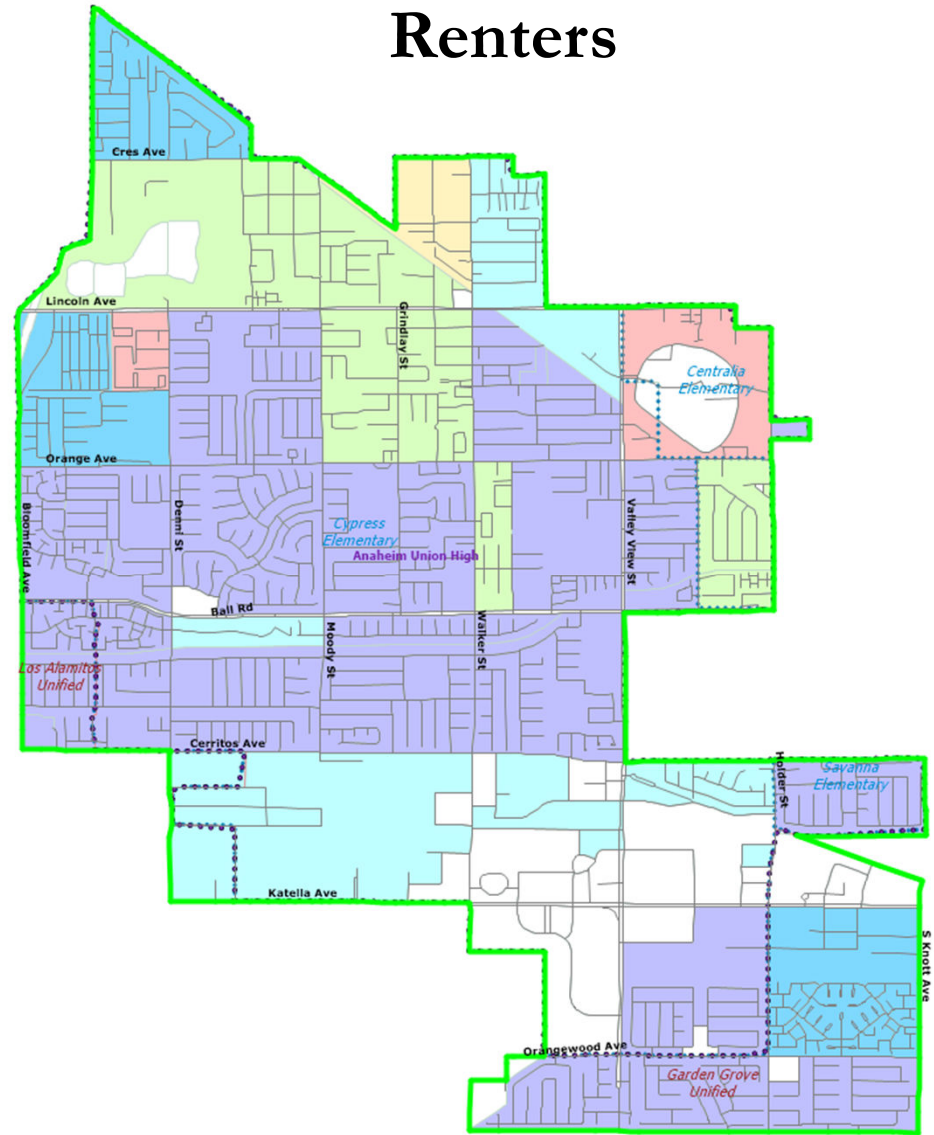
Other Socio-Economic Demographics

Income over \$75k

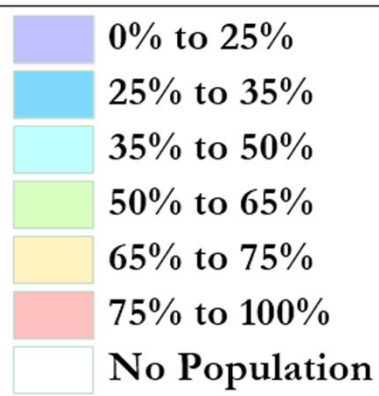


©2021 CALIPER

Renters



©2021 CALIPER



Public Mapping and Map Review Tools

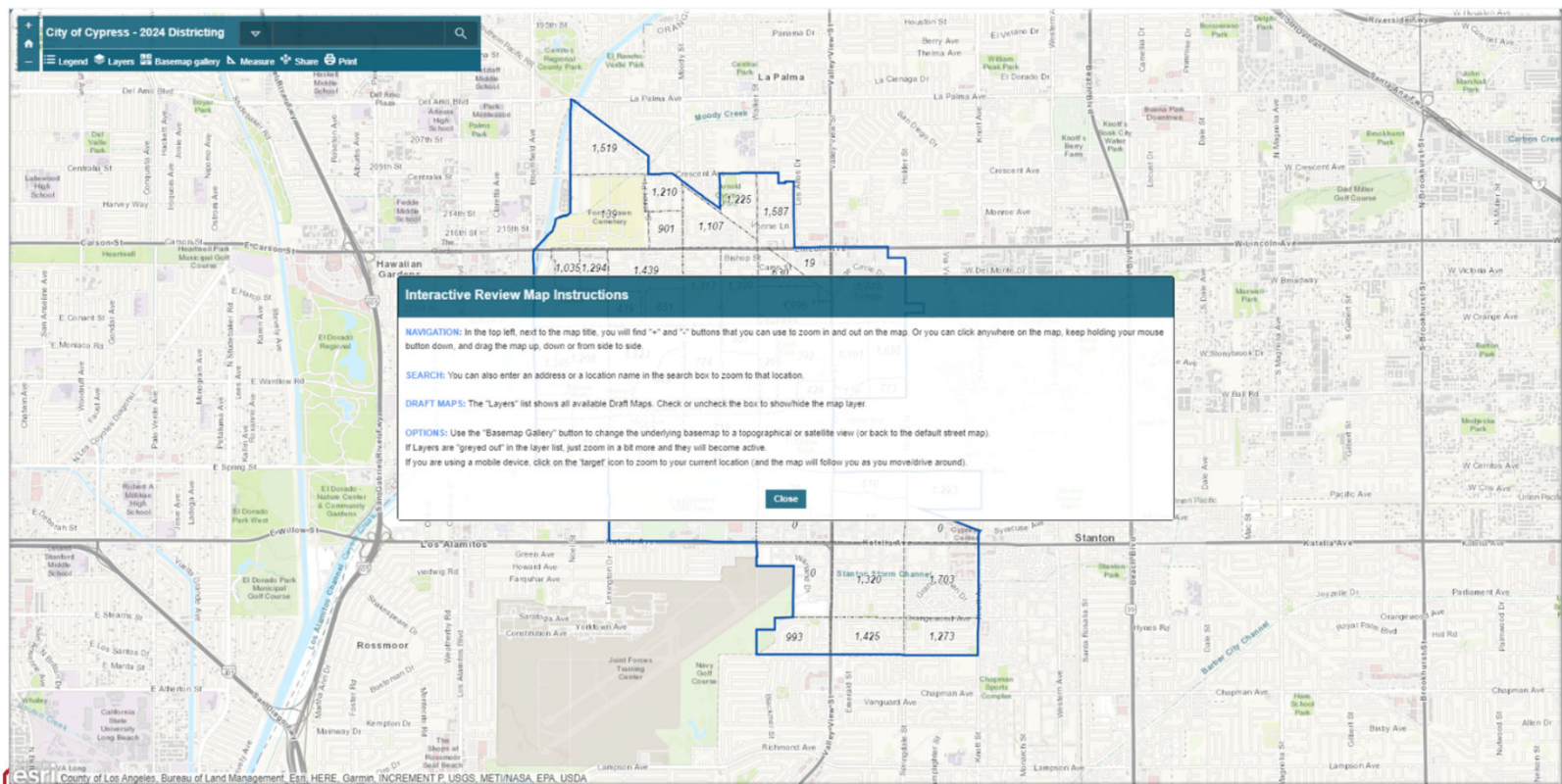
- Different tools for different purposes
- Different tools for different levels of technical skill and interest
 - Simple “review draft maps” tool
 - Paper-based simple “Draw a draft map or community” tool
 - Powerful, data-rich online “Draw a draft map” tool

Whether you use the powerful (but complicated) online mapping tool, the paper kit, or just draw on a napkin, we welcome your maps!

Simple Map Review Tool

Online Interactive Review Map

- ESRI's "ArcGIS Online" – similar to Google Maps in ease of use
- Used to review, analyze and compare maps, not to create them
- Includes overlays of “community of interest” and other data



Simple Map Drawing Tool

Paper “Public Participation Kit”

- For those without internet access or who prefer paper
- Total Population Counts only – no demographic numbers

City of Cypress - Districting 2024
Public Participation Kit

Name: _____

Phone and/or email: _____

Each number indicates the total population of that "population unit" area. Each district must have essentially equal population. The population of each of the 5 districts must be close to 10,050, with no more than a 1,005 difference between the largest and smallest.

An online version of this map that allows you to zoom in and out for more detail is available as a link from the City website.

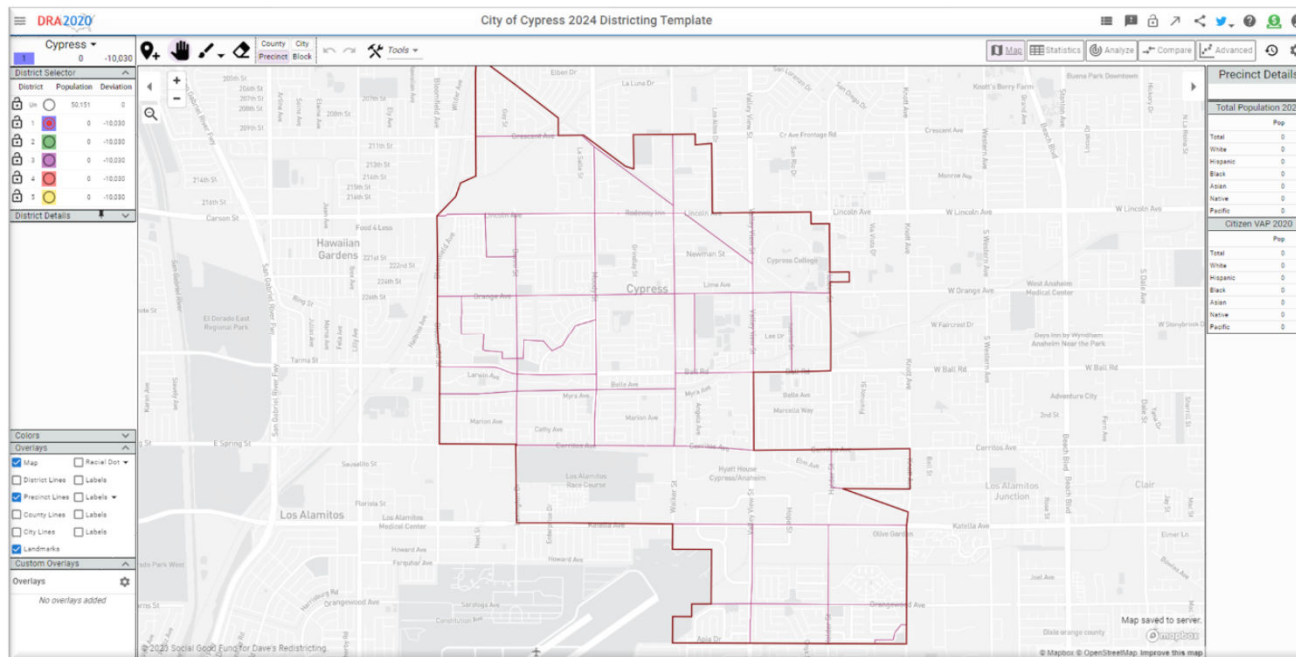
Please use a thick dark-colored pen to draw your map, then submit it at City Hall or by email to mapcypress@cypressca.org. You can hand-deliver, mail, fax, scan and email, or photograph and email your map.

©2021 CALIPER

Online Map Drawing Tool

Simple “paintbrush & eraser” tool. A 4-minute “how-to” video is on the website.

- Full demographic data available
- Create, collaborate and share your map
- Remember: you must send in the link to your map when you finish or the City has no way to know you drew a map.



Your Turn:

1. What area do you consider your neighborhood?
2. What are your “communities of interest”?

For each answer, please provide:

- ☐ Geographic boundaries
- ☐ The history or defining shared characteristic of the area

In the absence of public testimony, planning records and other similar documents may provide definition.

3. Any other questions about the process, criteria, maps, or any other part of this process?



Share Your Thoughts

Website

<https://mapcypress.org/>

Phone

(714) 229-6700

Email

mapcypress@cypressca.org